



CSE:EPG

OTCQB:NFLDF

FSE:634

EPIC GOLD

— CORP —

Disciplined • Strategic • Experienced



Disclaimer

This Presentation contains forward-looking statements that involve risks and uncertainties, which may cause actual results to differ materially from the statements made. When used in this document, the words "may", "would", "could", "will", "intend", "plan", "anticipate", "believe", "estimate", "expect" and similar expressions are intended to identify forward-looking statements. Such statements reflect our current views with respect to future events and are subject to such risks and uncertainties. Many factors could cause actual results to differ materially from the statements made, including those factors discussed in filings made by us with the Canadian or American securities regulatory authorities. Should one or more of these risks and uncertainties, such as results of current exploration programs, the general risks associated with the mining industry, the price of gold and other metals, currency and interest rate fluctuations, increased competition and general economic and market factors, occur or should assumptions underlying the forward-looking statements prove incorrect, actual results may vary materially from those described herein as intended, planned, anticipated, or expected. We do not intend and do not assume any obligation to update these forward-looking statements. Potential shareholders are cautioned not to put undue reliance on such forward-looking statements. Scientific and technical information has been reviewed and approved by a Qualified Person (as defined by NI 43-101). This presentation includes disclosure of 'historical estimates' as defined in NI 43-101. These are not current mineral resources and should not be relied upon as such.

Vision

Value creation through discovery and strategic transactions

Cash-backed valuation

- Strong treasury supports downside / provides strategic optionality
- Positioned to invest in quality assets

680 Koz historical resource base + upside

- Multiple targets with repeatable signatures
- Resource growth + new discovery leverage

Multiple Value Creating Pathways

- Discovery drilling, Strategic M&A, Asset monetization, Partnerships/JVs
- Not dependent on a single binary outcome

Portfolio in proven gold belts

- Four gold projects in Quebec and Ontario
- Infrastructure rich mining friendly jurisdictions

Systematic targeting

- Mineral systems framework + modern geophysics
- Drill-ready target inventory across the portfolio

Highly Attractive Valuation

- Trading at less than Cash & Equivalents (MC: \$14Mi : \$14-17Mi Ca & Eq)
- Current EV/oz \$0/oz (Peer average ~\$50/oz) +/- \$35Mi unrealized value

Pillars

Right Market / Right Timing

- Gold entering 5-year price reset phase (~\$5,000/oz)
- Strong demand led by central banks
- Supply is steady - recycling less responsive than expected

Access to Capital

- \$3 Million in Cash
- \$11 Million in NFG shares
- \$3 Million in NFG shares (contingent)
- 20% owned by institutions

Multiple Value Creating Pathways

- New discoveries with the drill
- Resource expansion and re-modeling
- Strategic M&A opportunities
- Monetize existing assets

Quality Projects

- Tier 1 jurisdiction
- The right target (size, grade, ability to deliver results)
- Solid base to build on (Engineering study, MRE, well defined target)
- Financeable (Demonstrable economics, clear path to mining)

Right People

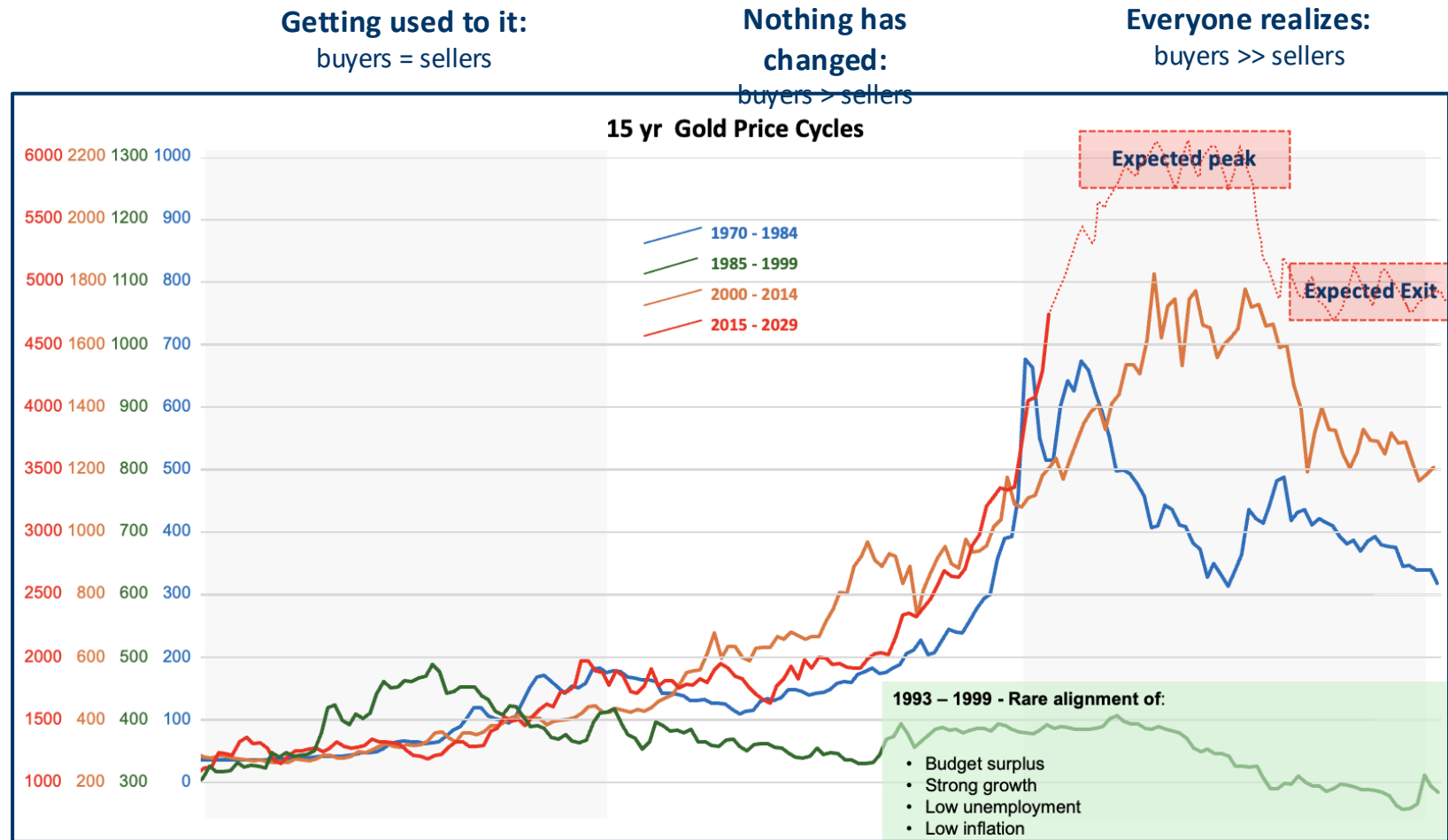
- Decades of experience in all aspects of exploration, development and mining
- Decades of experience in capital markets
- Years of experience with ESG
- Incentivized to succeed

Highly Attractive Valuation

- Trading at less than Cash & Equivalents (MC: \$11Mi : \$12-15Mi Ca & Eq)
- Current EV/oz \$0/oz (Peer average ~\$50/oz) +/- \$35Mi unrealized value
- Historical Gold Resources of 680,000 oz*
- Multiple re-rating catalysts ahead

Market & Timing

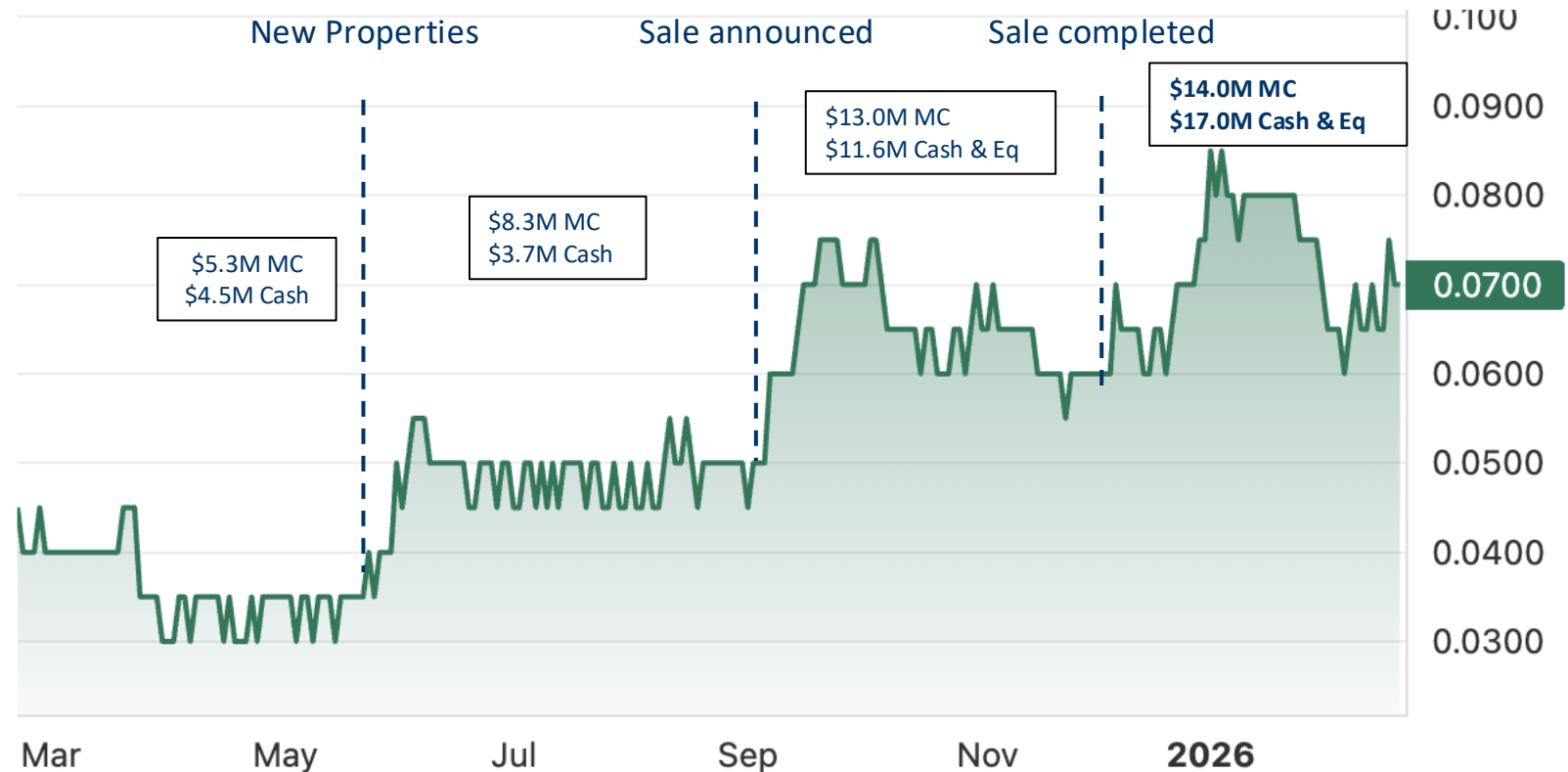
- Gold tracks money supply, just not in a straight line
- The markets need time to adjust and realize, and the chart shows that 15 years is the timeline for adjustments to occur
- Given the gold price reset underway we need to change the way we think:
- 3.0 g/t cut-off at \$1500/oz Au is the same as 1.0 g/t cut-off at \$4500/oz Au
- Average underground grades for ROM:
 - \$225/tonne at \$4500/oz = 1.5 g/t
 - \$225/tonne at \$1500/oz = 4.5 g/t
 - \$225/tonne at \$1200/oz = 5.8 g/t
 - \$225/tonne at \$400/oz = 17.5 g/t



From Cipher Research

Market & Timing

- Back in May we were valued just above cash
- We acquired new projects and immediately got value
- We announced monetization of NL properties and got another bump
- Increase in price of gold and NFG shares leaves EPG trading below Cash & Eq value with no value for current portfolio



Capital

Cash: \$3.0 Mi
Securities: \$11.0 Mi
Contingent: \$3.0 Mi
Cash & Equivalents

\$14 Million
Market Cap

210 Million
Shares Outstanding

0
Warrants

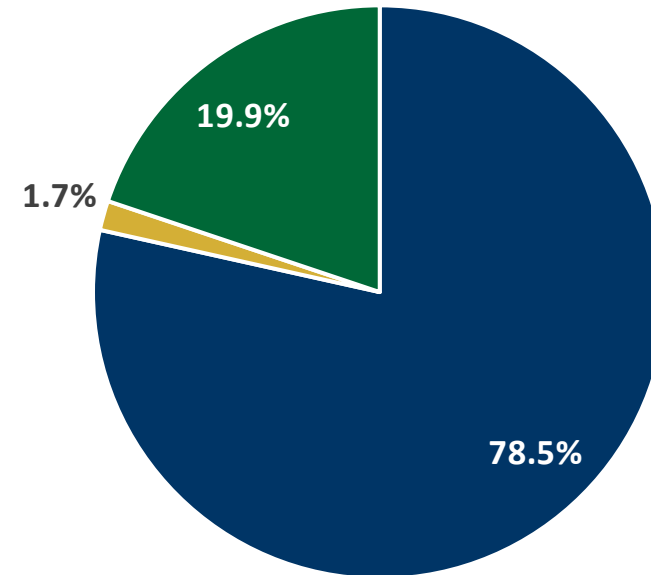
8.3 Million
Options

218 Million
Fully Diluted

750,000
Shares/Day
Avg. Volume/Day

\$0.025-\$0.085
52 Week High/Low

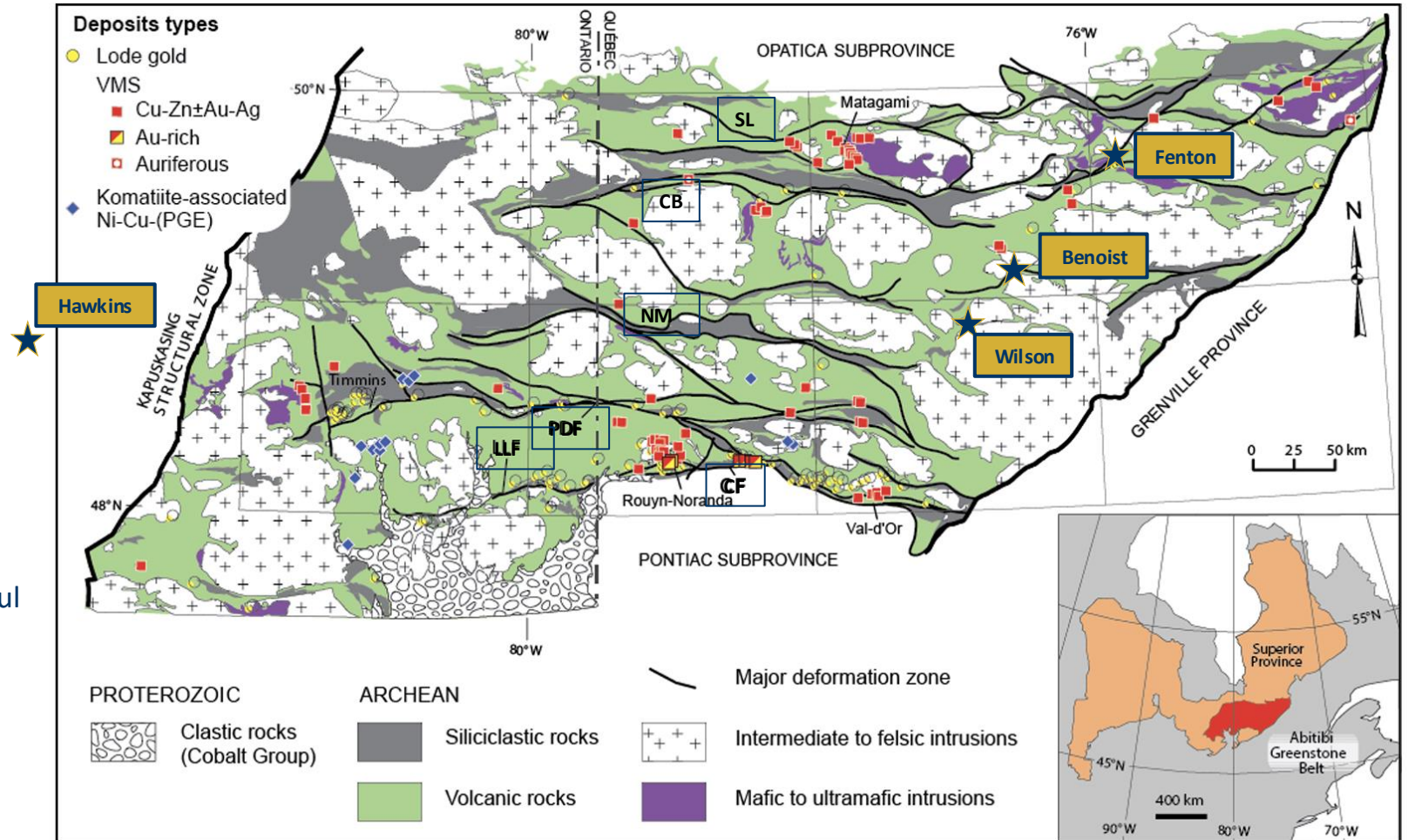
Share Structure



■ Retail Float ■ Management & Insiders ■ Institutional

Projects - Location

- World-class orogenic gold district in Ontario-Québec (includes VMS and base metals)
- One of the largest and best-preserved Archean (2.6-2.8 billion years old) greenstone belts
- Over 100 years of continuous production
- Over 200 million ounces of gold produced
- Still making discoveries along most explored structures:
 - Destor-Porcupine Fault Zone
 - Larder-Lake Cadillac Fault Zone
- Exploration to the NE has also been very successful but nowhere near the time and money has been invested yet:
 - Normetal Fault Zone
 - Casa Berardi Fault Zone
 - Sunday Lake Fault Zone

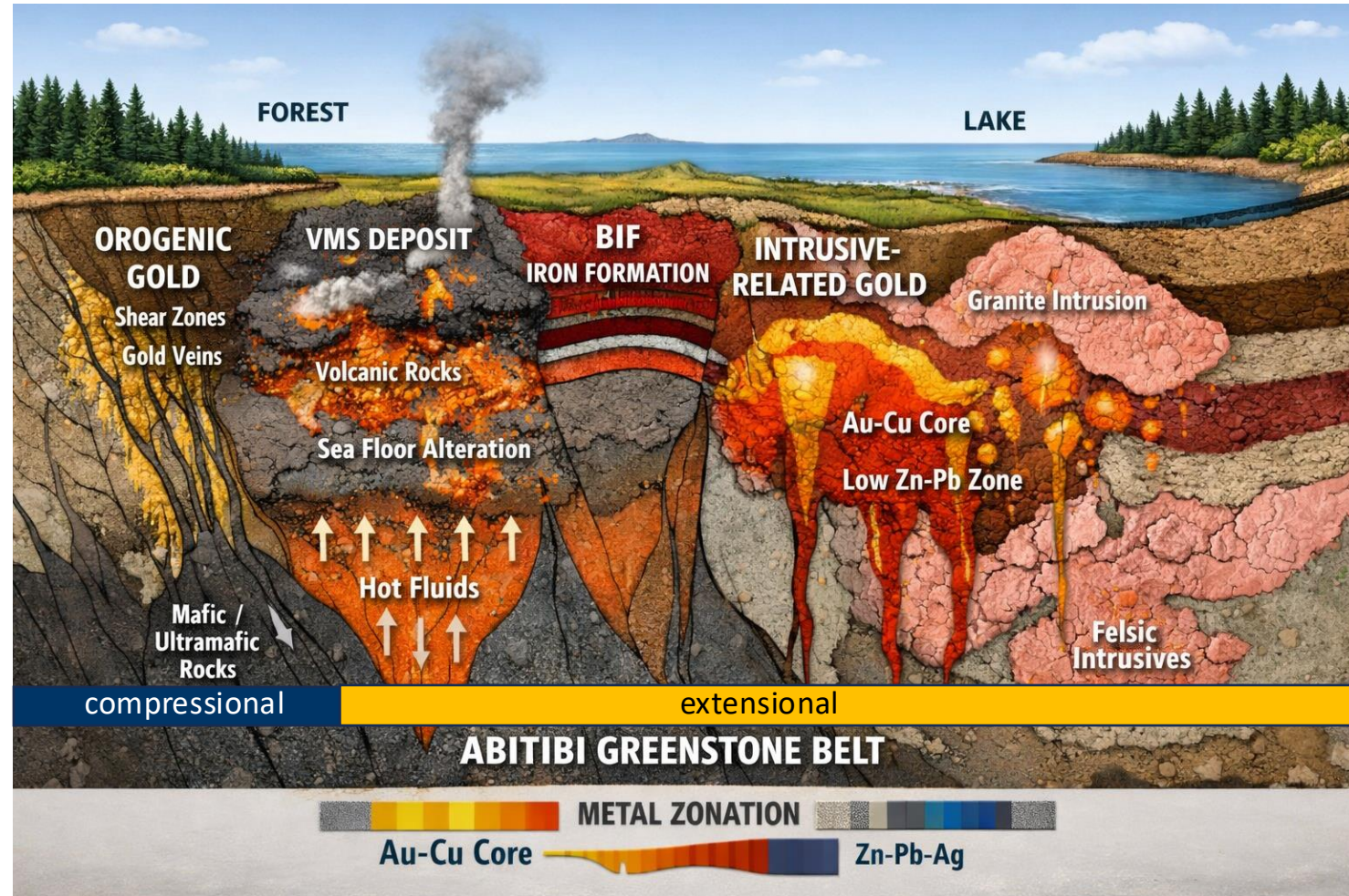


Projects - Mineral Systems

Schematic section of various deposits found in the Abitibi:

- All have unique targeting features
- Several deposits have characteristics of more than one type
- Importance of understanding ore genesis and developing project specific targeting criteria

Project	System(s)	Key Features
Fenton	Orogenic/ Intrusion	Structural remodification, broad sulphide stock +/- tourmaline
Wilson	Orogenic/VMS	Structural control, Volcanogenic sulphides
Benoist	Orogenic/VMS	Rhyolite dome complex, intense deformation corridors
Hawkins	Orogenic	Deformation, faults/shears, quartz veining, pathfinder elements



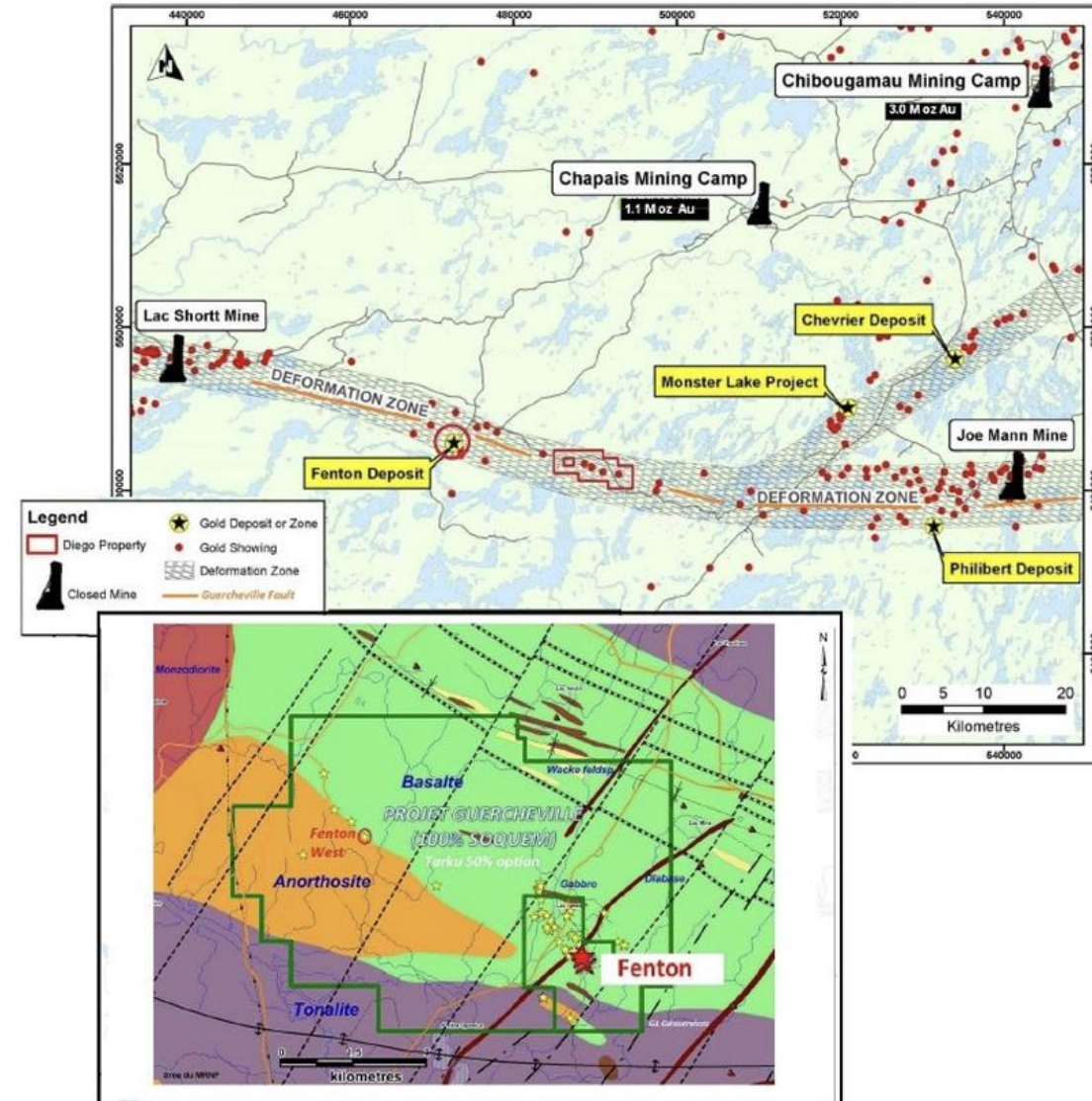
Similar theme across all of our properties:

- ✓ Mining friendly jurisdiction (North American)
- ✓ Reputable gold resource
- ✓ Significant upside
- ✓ Financeable:
 - ✓ Demonstrable Economics
 - ✓ Clear path to mining
 - ✓ Size and grade potential to justify CAPEX
 - ✓ Proximity to existing infrastructure

Projects - Fenton

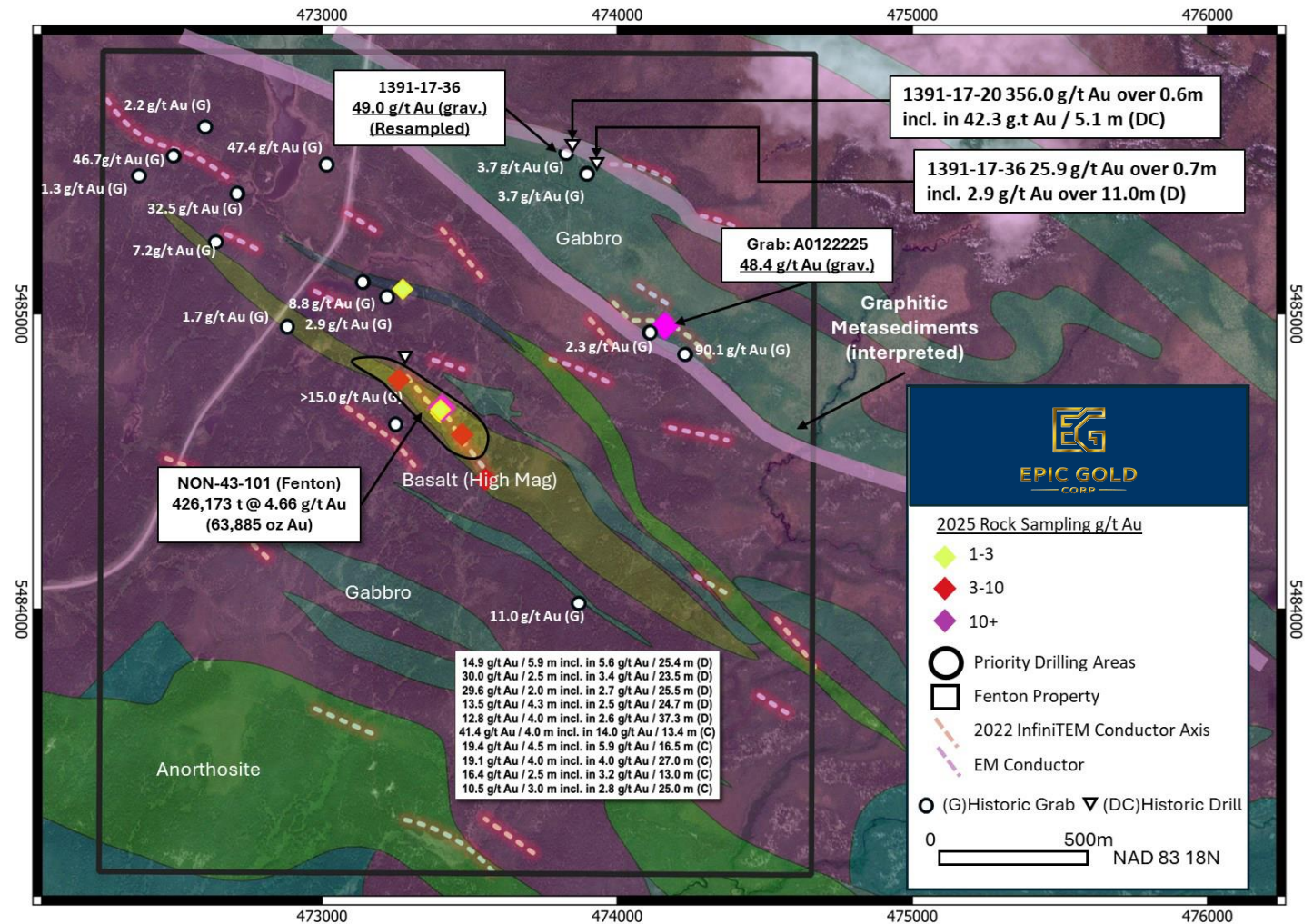
Location & System Context

- Chapais area, Québec — Chibougamau district, Abitibi greenstone belt
- Regional control: Guercheville deformation corridor (structural focus for gold)
- Infrastructure advantages: established mining region, road access, services nearby
- Abundant processing capacity in close proximity
- Why it matters: efficient exploration + future development optionality



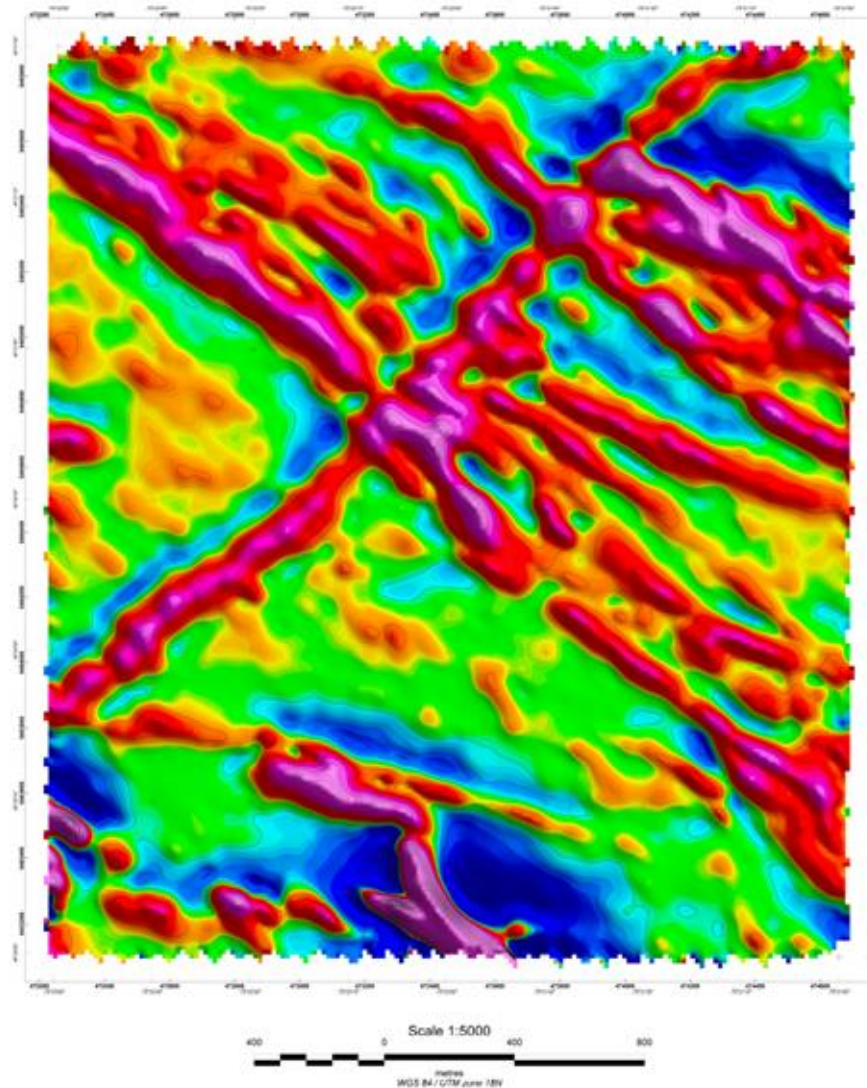
Geophysics & Targeting

- High-resolution drone magnetics + VLF-EM (2025) with LiDAR terrain support
- Results highlight continuous belt-parallel magnetic zones and key fold/shear controls
- Mineralization is focused along magnetic gradients / corridor margins (competency contrasts)
- Priority drill targets defined by overlap of Mag + VLF + historical IP/resistivity + mapped structure +



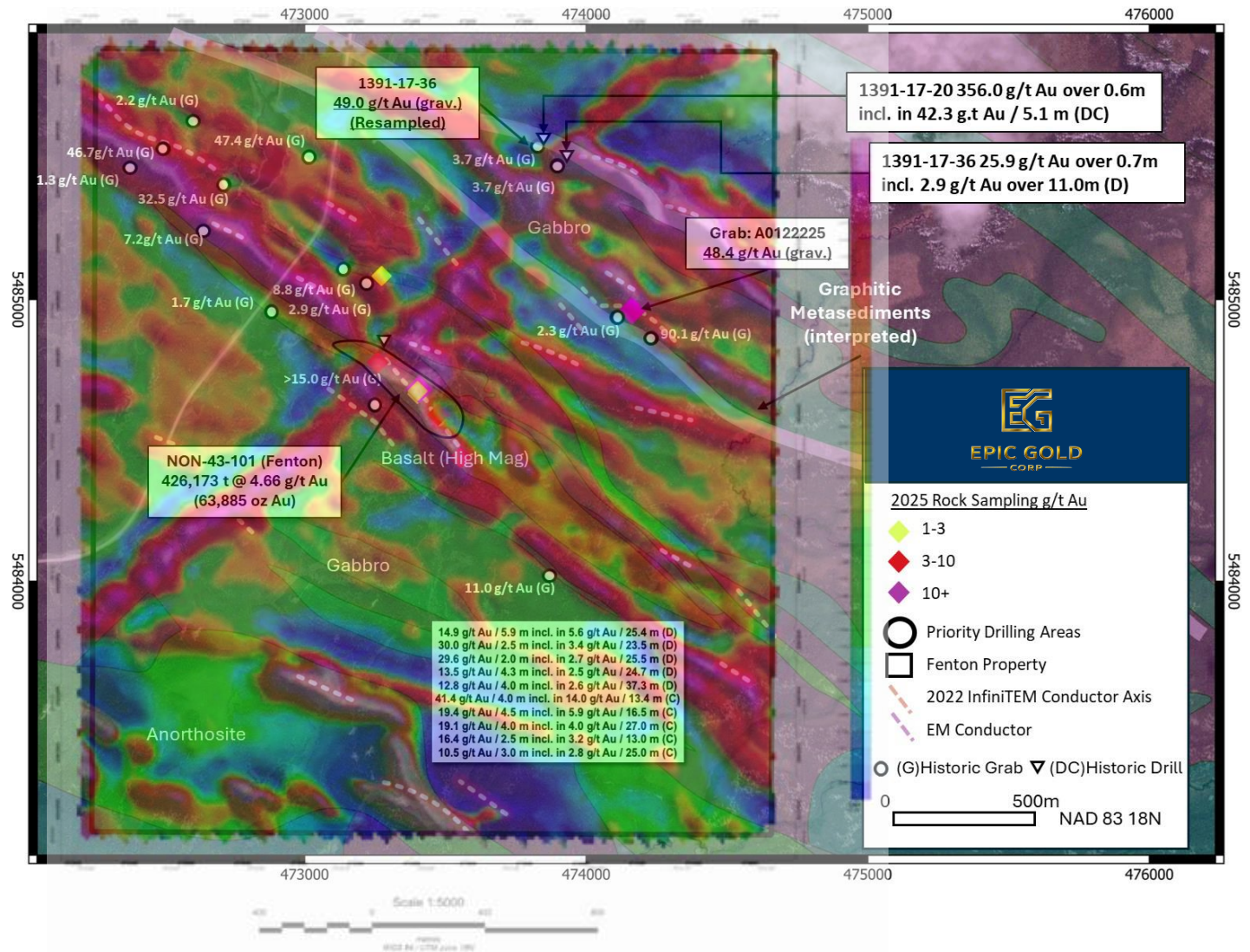
Geophysics & Targeting

- High-resolution drone magnetics + VLF-EM (2025) with LiDAR terrain support
- Results highlight continuous belt-parallel magnetic zones and key fold/shear controls
- Mineralization is focused along magnetic gradients / corridor margins (competency contrasts)
- Priority drill targets defined by overlap of Mag + VLF + historical IP/resistivity + mapped structure +



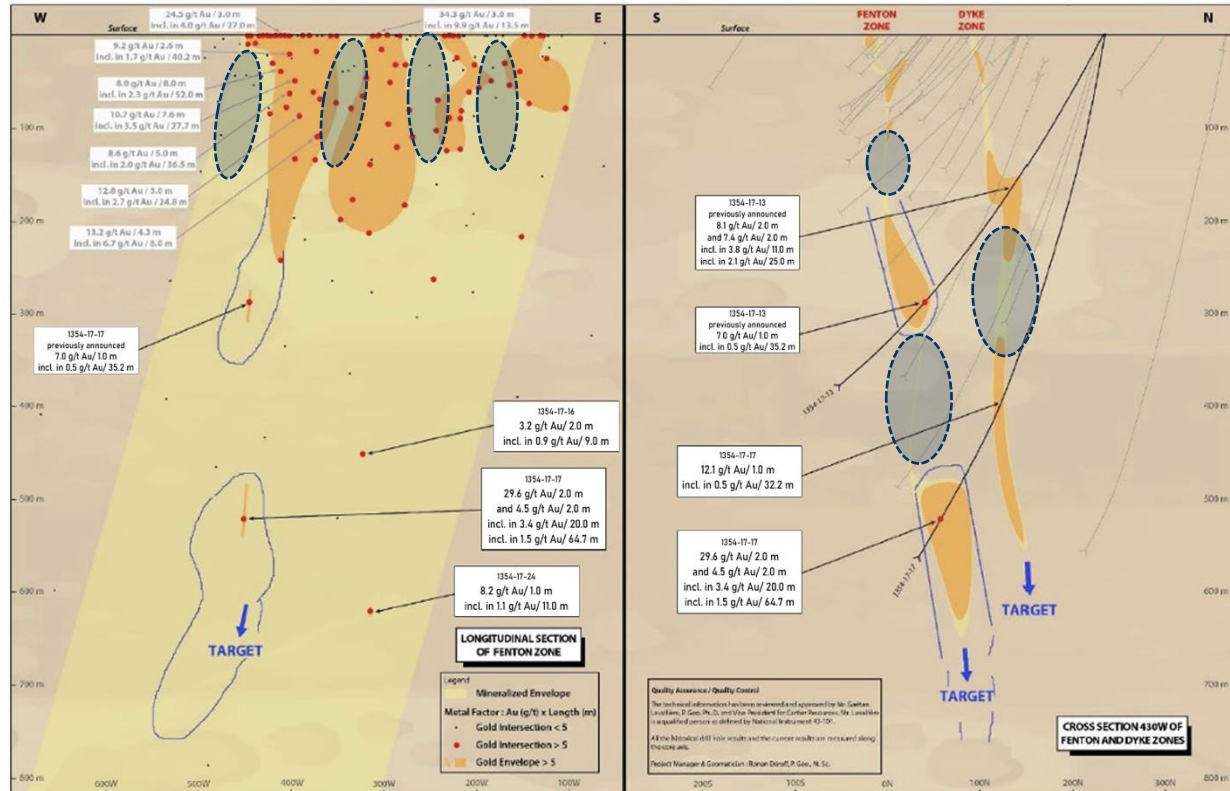
Geophysics & Targeting

- High-resolution drone magnetics + VLF-EM (2025) with LiDAR terrain support
- Results highlight continuous belt-parallel magnetic zones and key fold/shear controls
- Mineralization is focused along magnetic gradients / corridor margins (competency contrasts)
- Priority drill targets defined by overlap of Mag + VLF + historical IP/resistivity + mapped structure +



Issue

- Explaining apparent misses
- Discontinuous results in historical drilling



Long section

Cross section

Theory

- Boudinage
- Repetition of Au zones



Evidence

- Micro boudins in drill core

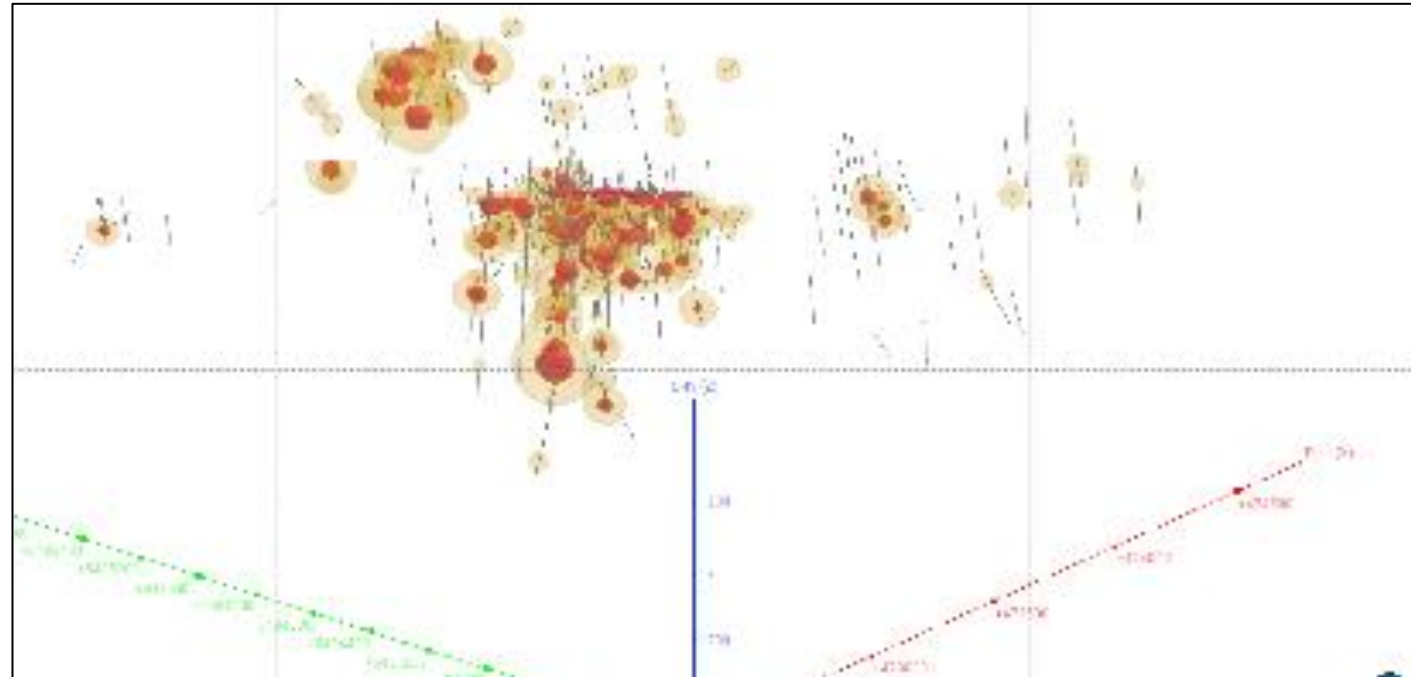


Core section

Projects - Fenton

Resource & Upside

- Historical resource (2000): 63Koz - 428KT @ 4.66 g/t Au*
- 11,000m (25 ddhs) since MRE
- Internal sensitivity calculations considering current Au price and subsequent drilling indicates potential for bulk mineable target
- 2026 work plans designed to identify additional Fenton-like targets



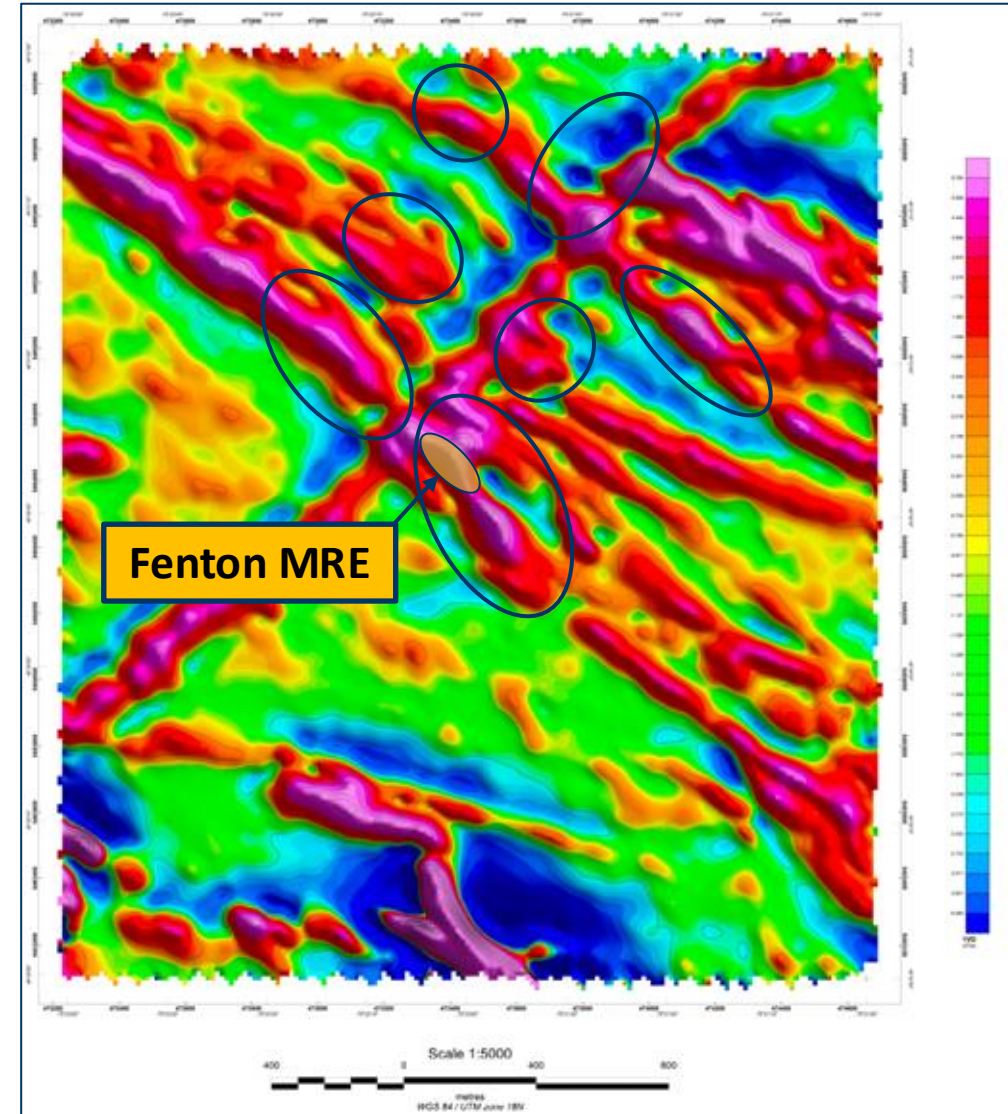
		TOTAL			ABOVE 50m	
Category	Cut-off	Tonnes (M)	g/t Au	Koz	Tonnes (M)	Koz
Target	0.10	27.77	0.82	730.01	2.05	145.44
Target	~0.20	24.71	1.16	542.62		
Target	0.50	3.06	1.90	187.38	0.35	57.16
Target	0.75	1.70	2.49	136.07	0.22	47.51
Historical MRE	2.00	0.43	4.66	63.89		

*Historical estimate: a Qualified Person has not done sufficient work to classify the historical estimate as a current mineral resource; it should not be relied upon as current.

Projects - Fenton

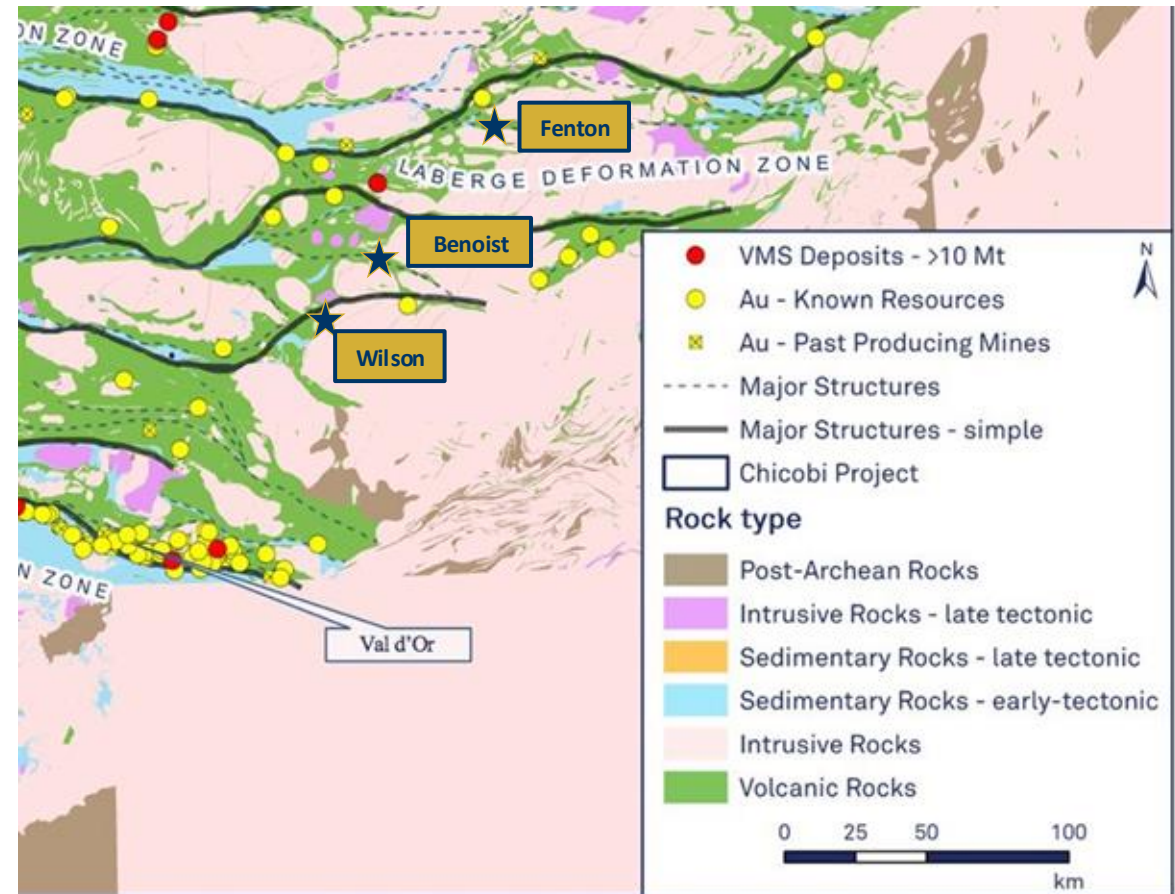
Current Drill Program

- Designed to test 6 Fenton-like geophysical signatures, most with identified Au mineralization, to identify additional targets for resource development
- A total of 10 holes and 4,256 metres recently completed
- QA/QC concern with assay results – samples resubmitted for gravity and metallic screen assay



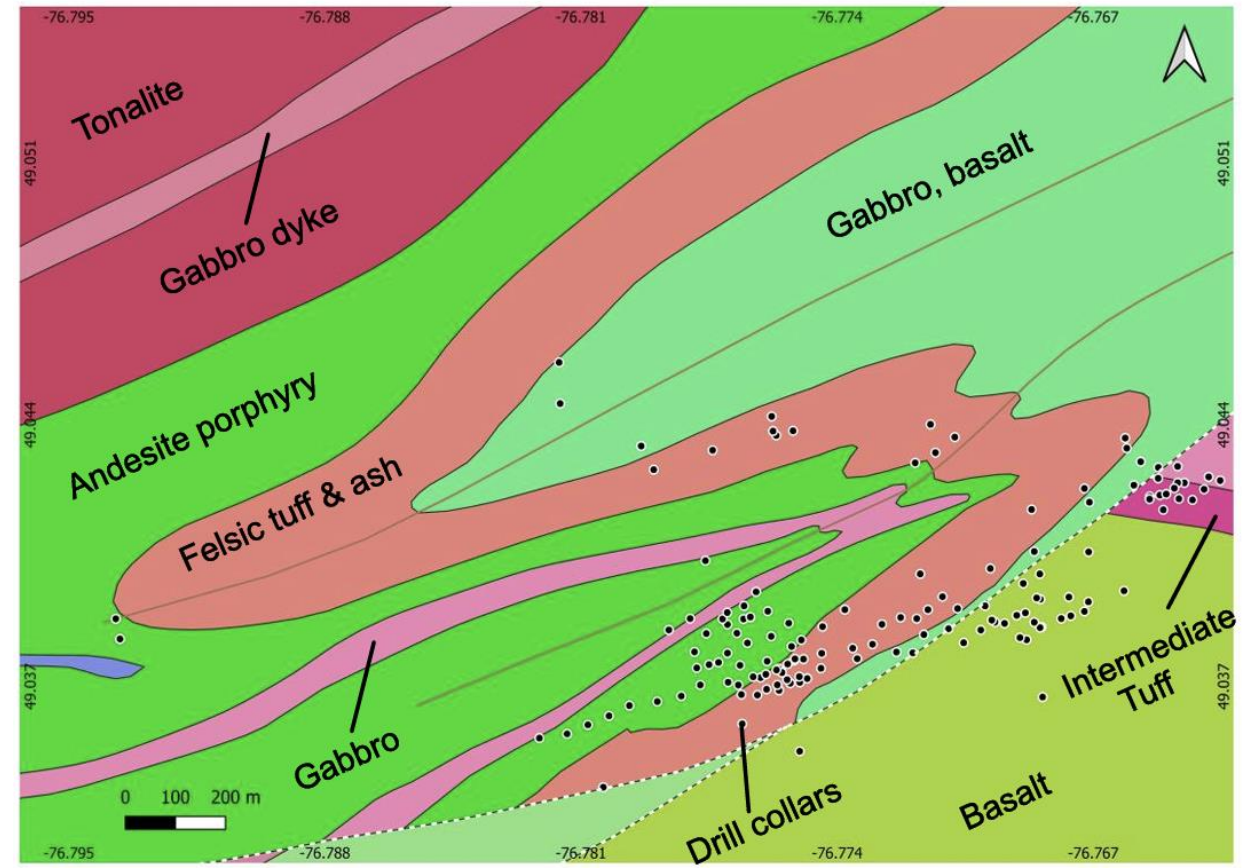
Location & System Context

- Abitibi Greenstone Belt (Québec) - Wilson is situated in the North Volcanic Zone, underlain by Archean volcanic rocks of the Quévillon Group
- Property architecture is predominantly NE–SW, with steeply dipping units and belt-parallel structural trends across the project
- Big picture: Wilson is now interpreted as a single, structurally coherent gold system linking multiple zones into one property-scale framework (scale + depth vectors)
- Abundant processing capacity in close proximity



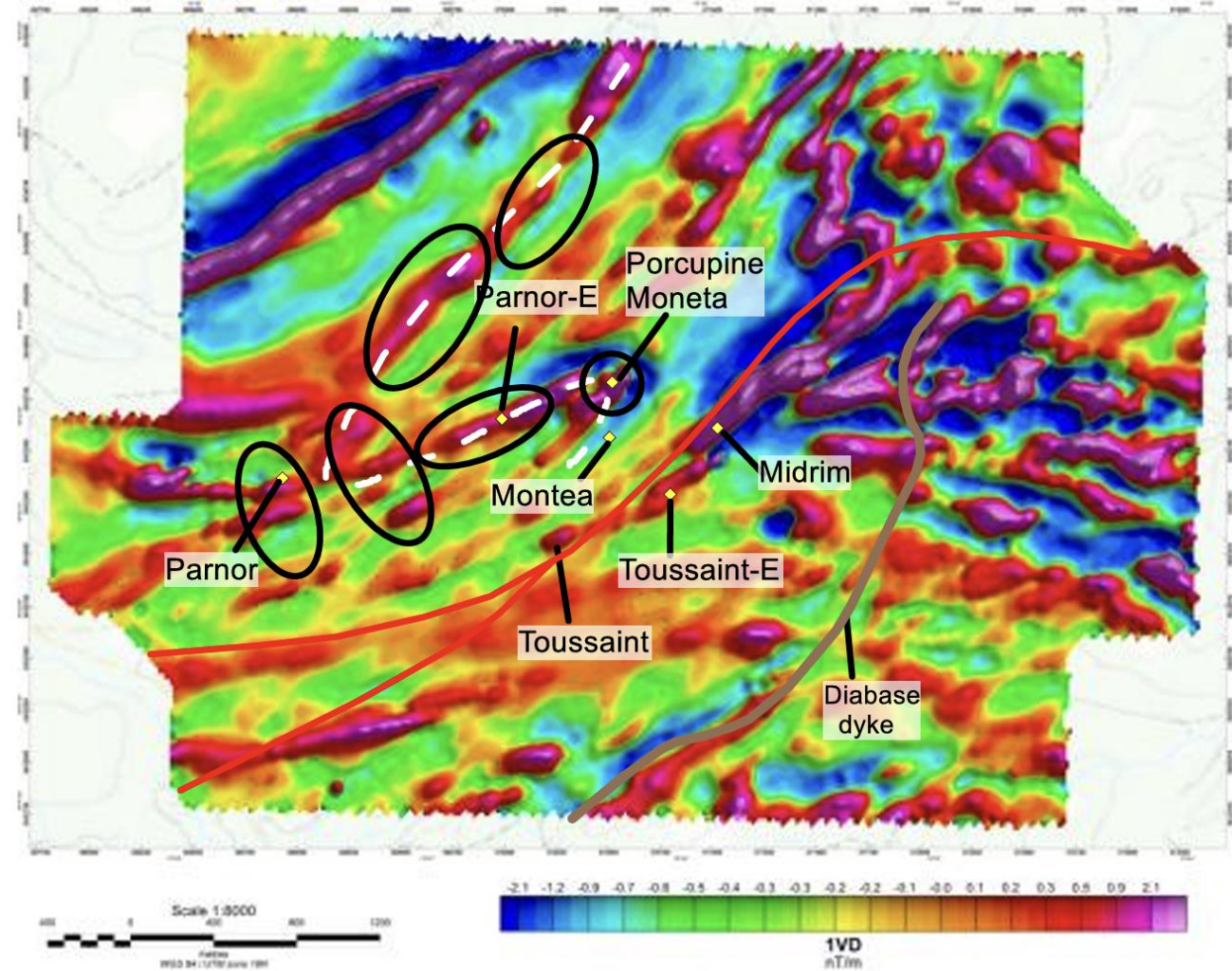
Geophysics & Targeting (2025)

- Recent geological mapping and re-interpretation indicates tight folding and favourable geological contacts for hosting gold
- Drilling along contact between Felsic tuff and Andesites, and basalts supports VMS targets



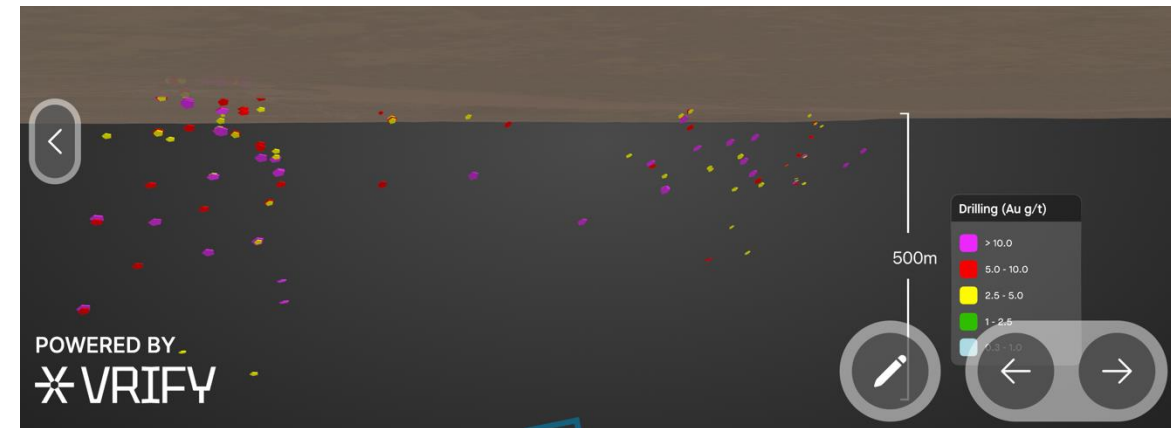
Geophysics & Targeting

- High-resolution drone magnetics + VLF-EM (2025) with LiDAR terrain support: ~714 line-km Mag; ~351 line-km VLF at 50 m spacing.
- Results highlight continuous belt-parallel magnetic zones and key fold/shear controls
- Mineralization is focused along magnetic gradients / corridor margins (competency contrasts)
- Priority drill targets defined by overlap of Mag + VLF + historical IP/resistivity + mapped structure



Resource & Upside

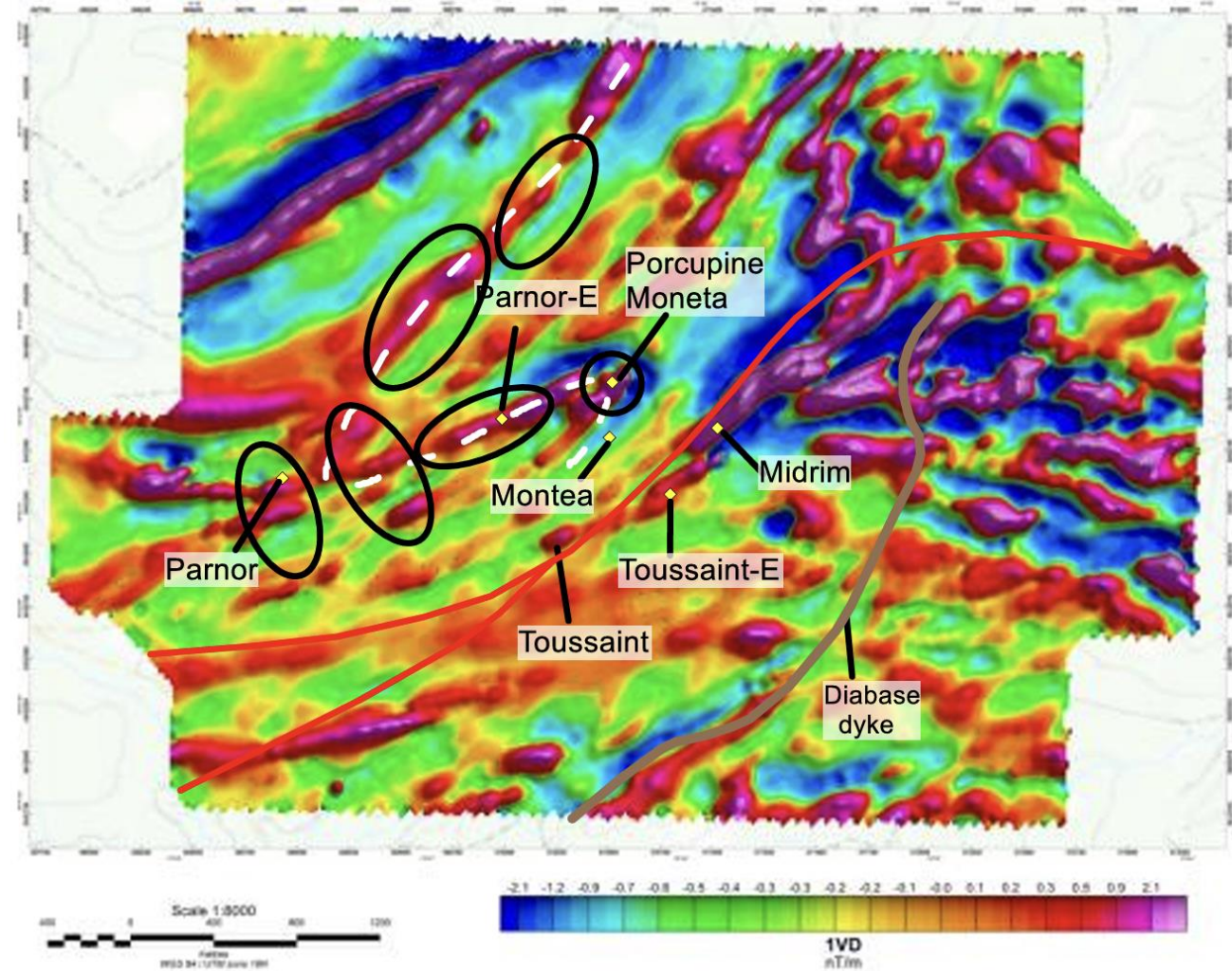
- Historical resource (1997): 42.9Koz - 187KT @ 7.10 g/t Au*
- 22,000m (92 ddhs) since MRE
- Internal sensitivity calculations underway considering current Au price and subsequent drilling indicates to explore potential for bulk mineable target
- 2026 work plans designed to identify additional Wilson-like targets along lithology and geophysical targets



Projects - Wilson

Plans

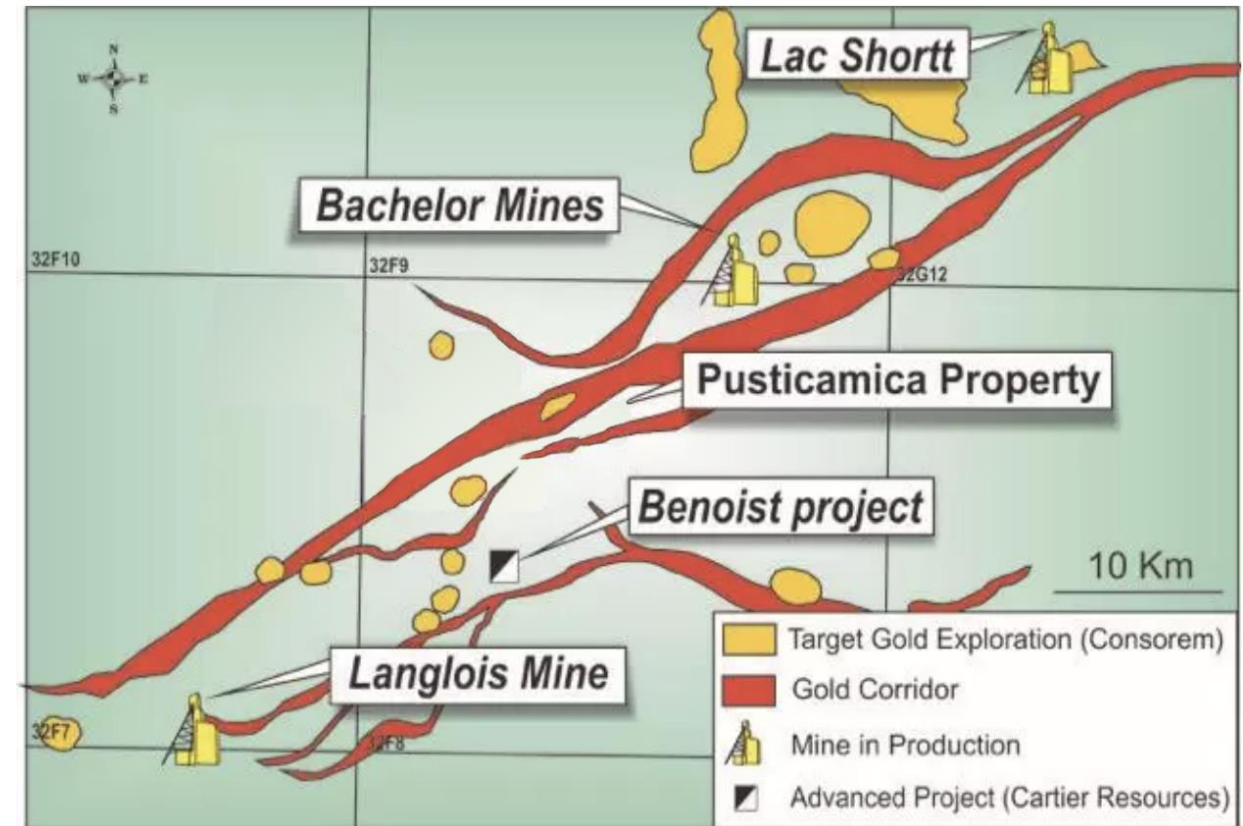
- Connect the dots
- Geophysics confirms geology and shows previous showings follow lithological contact
- Drilling along favourable horizon to identify targets to expand resources
- Re-evaluate current MRE considering current Au price and subsequent drilling to determine potential for economic deposit



Projects - Benoit

Location & System Context

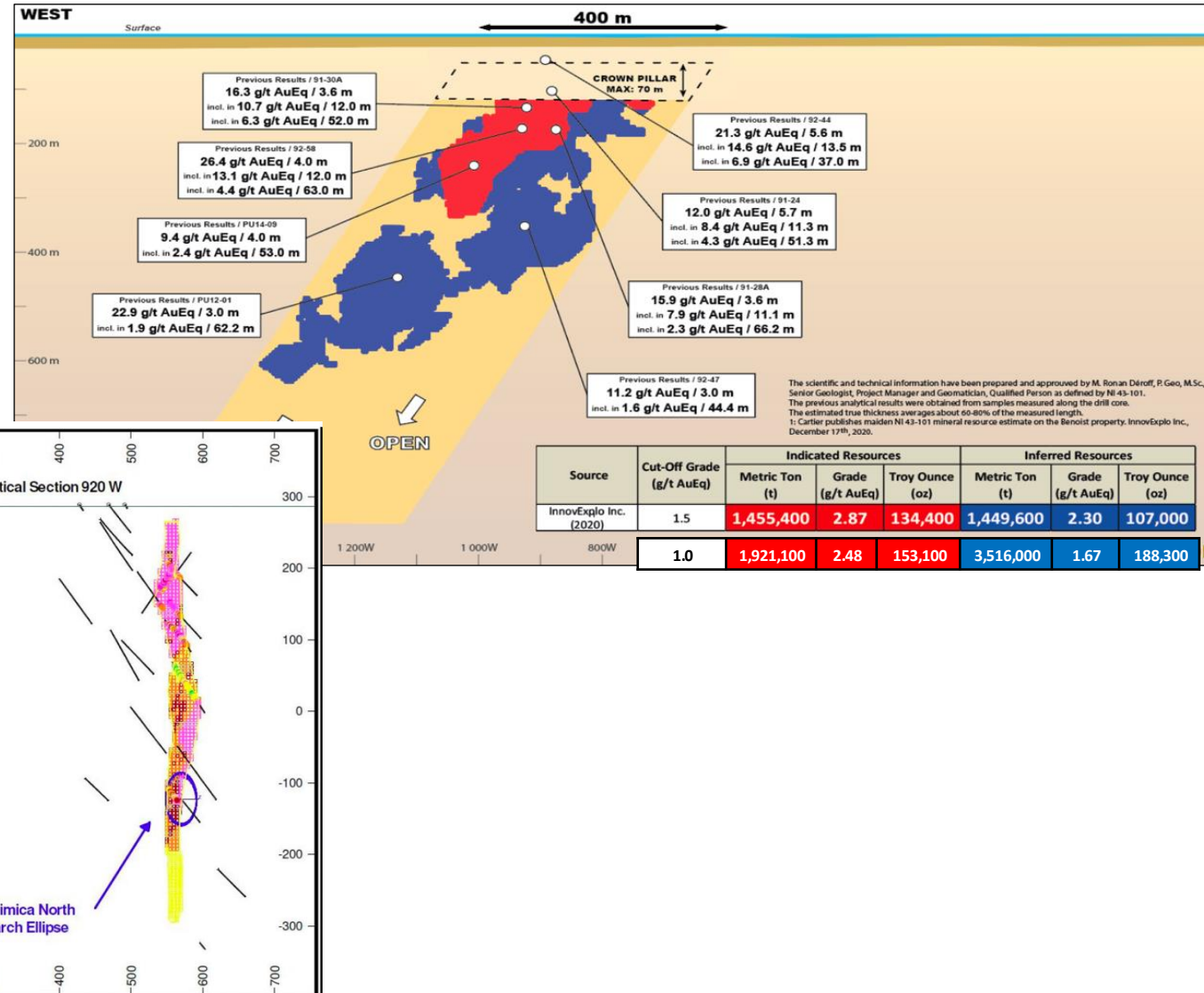
- Abitibi Greenstone Belt (Québec) - Benoit is situated in the NE-oriented volcano-sedimentary corridor known as the Miquelon segment
- Property architecture is predominantly ENE–WSW, with steeply dipping units and belt-parallel structural trends across the project
- Big picture: Benoit is interpreted as a structurally coherent gold system with mineralized cross-structures and sub-parallel systems
- Abundant processing capacity in close proximity



Projects - Benoit

Resource & Upside

- Historical (NI 43-101) MRE (2020) 241.4KozAu Eq (2.9MT @ 2.6 g/t AuEq) at 1.5 g/t AuEq cut-off; including 222.8 Koz Au (2.9 MT @ 2.4 g/t Au). Sensitivity indicates potential to increase to 341.4 Koz AuEq at a 1.0 g/t AuEq cut-off.*
- Increases to >340Koz at 1.0 g/t cut-off
- +/- 20m average width should allow cut-off to drop further
- Open down plunge
- Other targets untested

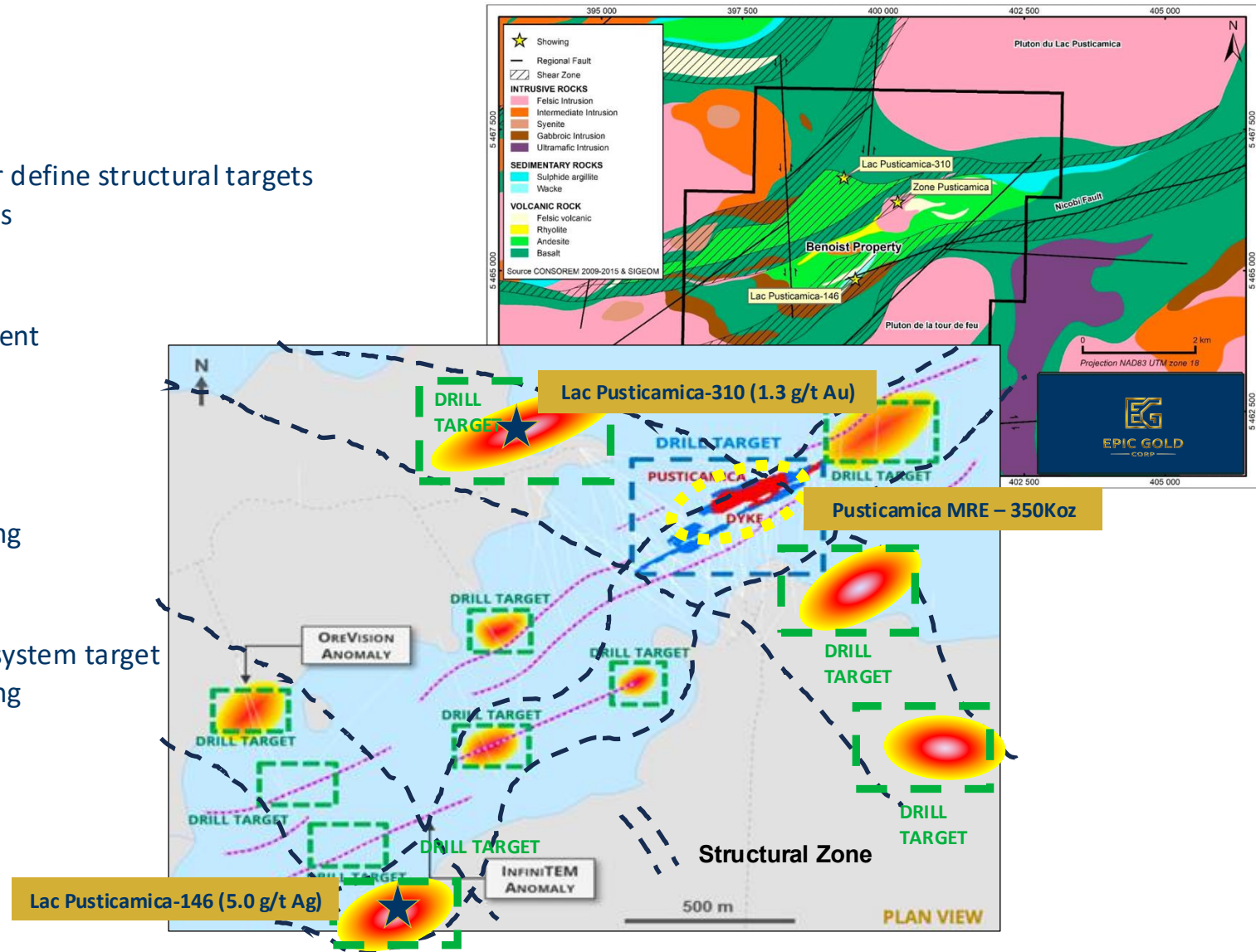


*Historical estimate: a Qualified Person has not done sufficient work to classify the historical estimate as a current mineral resource; it should not be relied upon as current.

Projects - Benoit

Targeting

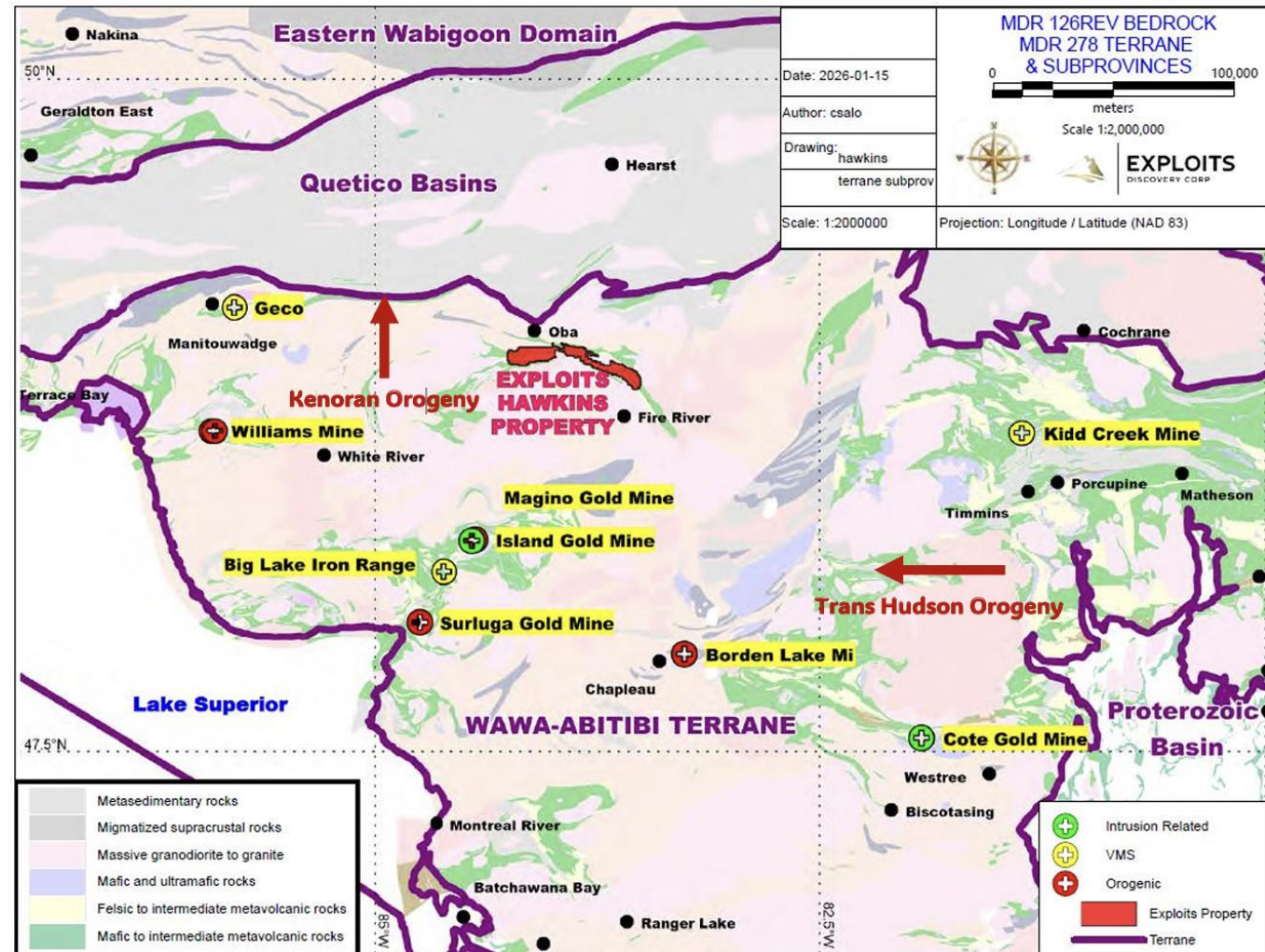
- Propertywide:
 - High-resolution drone Magnetics + EM to better define structural targets
 - Prospecting and mapping to identify new targets
- Pusticamica Main:
 - Re-evaluation of MRE in current price environment
 - Drilling to expand
- Lac Pusticamica-310:
 - Confirm orogenic-style gold mineralization
 - Drill targets based on geophysics and prospecting
- Lac Pusticamica-146:
 - Confirm Ag-Pb-Zn veining and identify mineral system target
 - Drill targets based on geophysics and prospecting



Projects - Hawkins

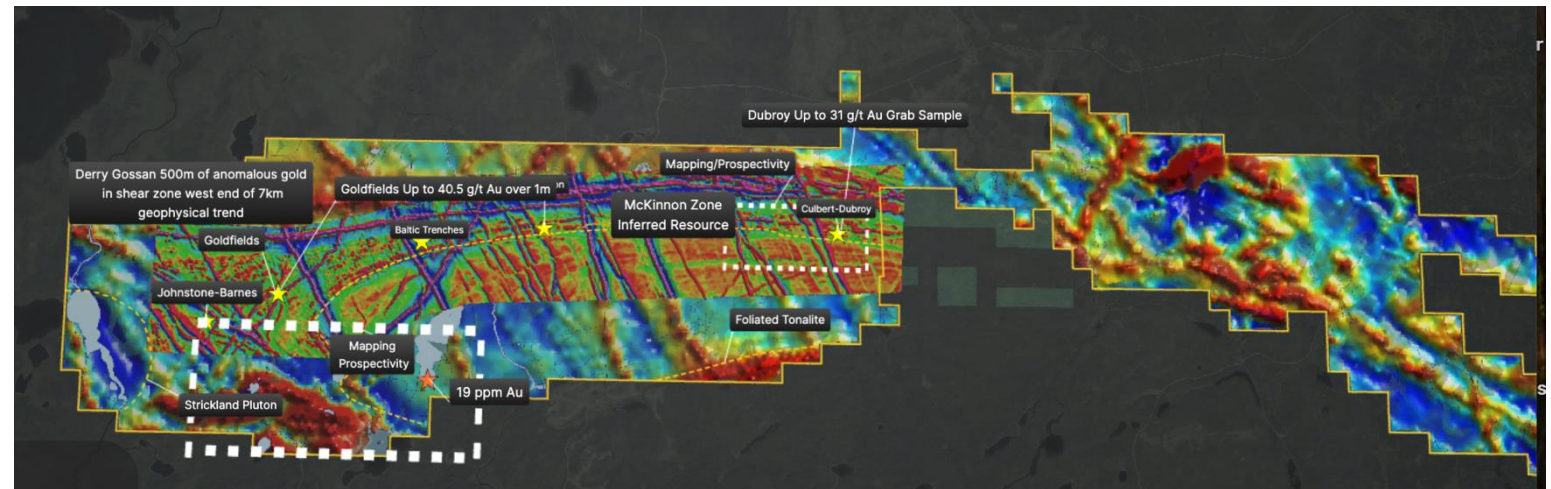
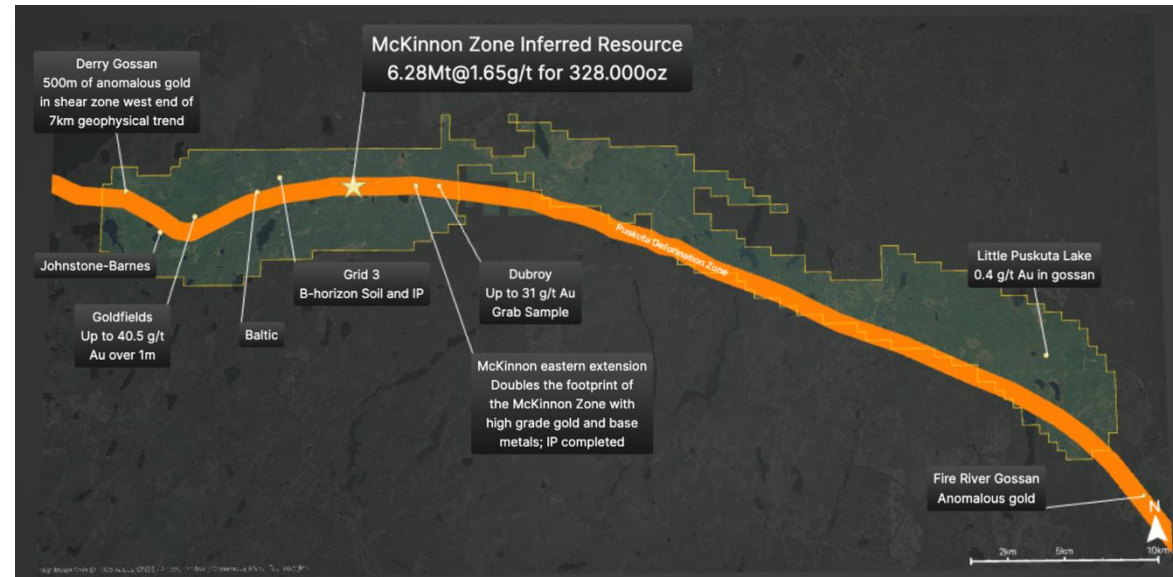
Location & System Context

- Hawkins is located 140 km WNW of Hemlo and 200 km E of Timmins in the Wawa Subprovince (Ontario)
- Hawkins is situated in Archean rocks of the Kabinakagami Lake greenstone belt
- Property architecture is defined by the E-W trending Puskuta Deformation Zone – the focus of the majority of the gold exploration in the region
- Big picture: Hawkins is interpreted as a structurally coherent gold system
- Several operating mines withing a 200 km radius of Hawkins



Geophysics & Targeting

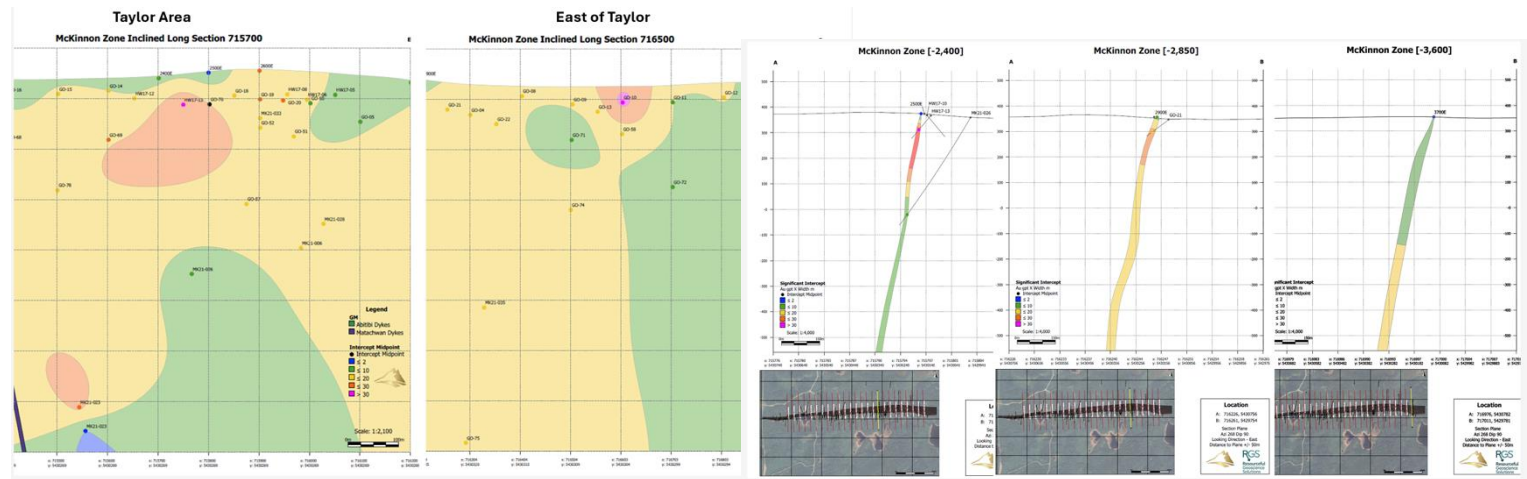
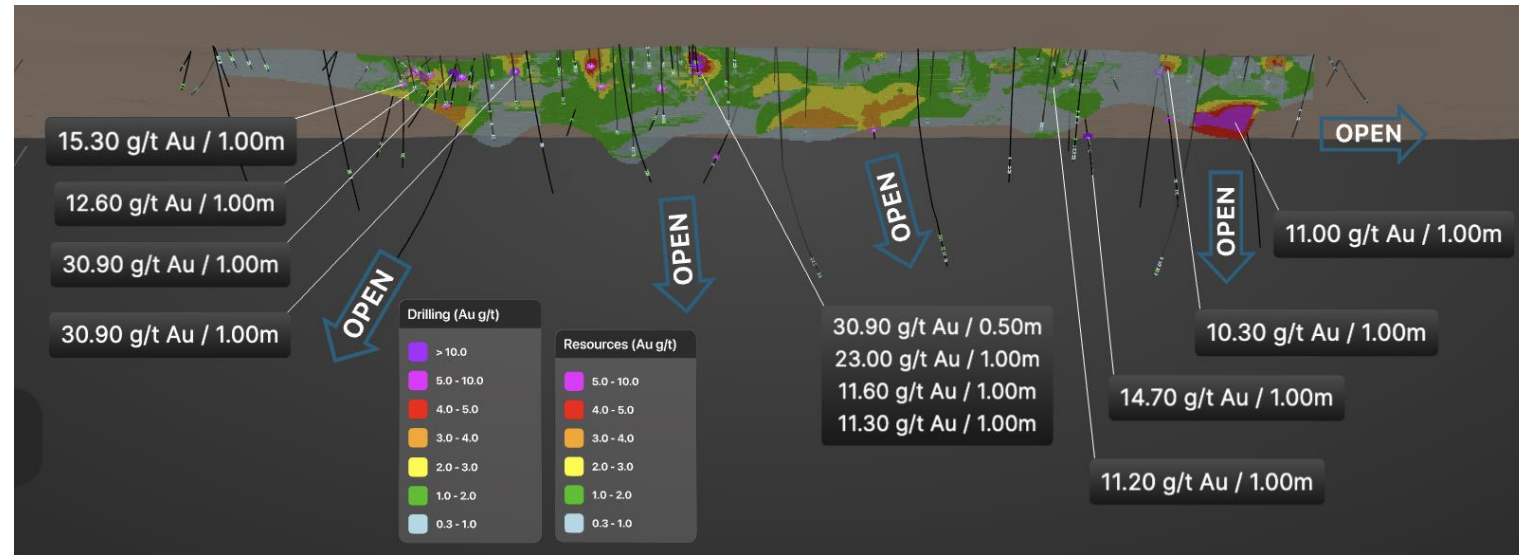
- Detailed airborne MAG defines structures in a portion of the property
- Historical prospecting has identified several prospective areas
- Mineralization is focused along deformation zones and cross-cutting faults



Projects - Hawkins

Resource & Upside

- Historical NI 43-101 MRE (2020) 328.8Koz-6.2MT @ 1.65 g/t Au at 0.5 g/t cut-off*
- 13,000 metres since MRE but little impact on overall size - resource is constrained within the deformation zone
- Current resource is run-of-mine grade but need to find higher grade areas to make a mine:
 - at depth or along strike
- Evaluate and develop other targets on the property



*Historical estimate: a Qualified Person has not done sufficient work to classify the historical estimate as a current mineral resource; it should not be relied upon as current.

Projects - Hawkins

Plans

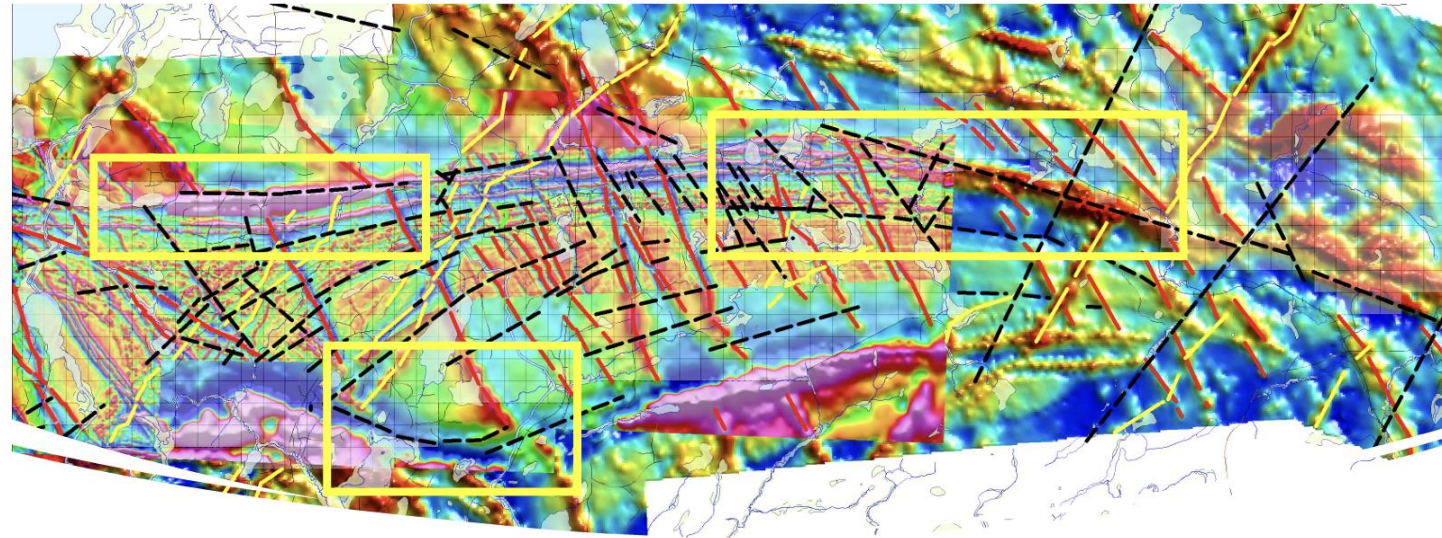
- 60 km long property/deformation zone
- Gold showings along the entire length
- Less than 2 km has detailed exploration/drilling
- Systematic exploration to develop additional drill targets
- Detailed evaluation of existing resource to determine areas for expansion and grade increase

Derry Gossan area

- Detailed Magnetic and EM geophysical survey
- Geochemical sampling
- Prospecting & mapping
- Trenching

East McKinnon area

- Trenching to investigate gold veins and over complex structures
- Locate Culbert shaft, map and investigate Paymaster vein
- Detailed Magnetic and EM geophysical survey
- Gravity survey
- Prospecting & mapping



Fold nose area

- Detailed Magnetic and EM geophysical survey
- Geochemical sampling
- Prospecting & structural mapping
- Lake sediment sampling (re-sample and locate source)

Rod Husband – President & CEO, Director

Rod is a senior executive with over 30 years of leadership in natural resources, including experience in M&A and strategic growth. He was previously President and CEO of technical and resource-focused firms. Rod contributes business development and capital markets insight.

Fiona Fitzmaurice – Chief Financial Officer

Fiona is a CPA with over 18 years of experience in financial reporting, compliance, and corporate finance. She has served as CFO for several public mining companies, including juniors in exploration and development. Fiona oversees the company's financial strategy and reporting.

Natalie Pietrzak-Renaud – Technical Advisor

Natalie is a professional geologist with over 20 years of exploration experience. She previously led exploration at the Hawkins Gold Project in Ontario and has held senior roles with several Canadian mining companies. At Epic, she provides technical expertise and strategic guidance on exploration programs. Her background spans gold, rare earths and diamonds across Canada and internationally

Mark Richardson – Technical Advisor

Mark is a professional geologist with over 10 years of exploration experience across Canada, with a focus on structural geology and gold deposits. He has held senior roles with several Canadian exploration companies including Epic, Labrador Gold, Gold Terra Resources and GeoVector.

Doug Cater – Chair

Doug is a professional geologist with over 35 years of discovery and development experience, notably as VP Exploration at Kirkland Lake Gold during its transformative growth. He played a key role in major gold discoveries at Macassa and Detour. Doug provides technical oversight and strategic direction.

Siri C. Genik – Director

Siri is a mining lawyer and ESG advisor with over 25 years of global project experience. She previously led stakeholder engagement at major companies including Rio Tinto and ArcelorMittal. Siri brings ESG governance, legal, and Indigenous engagement expertise to the board.

Larry Short – Director

Larry is a senior portfolio manager and investment strategist with over 35 years of experience in capital markets. He has served on public and private company boards and provides investor-centric guidance. Larry contributes financial oversight and market-facing strategy.

Guy Bédard – Director

Guy is a Québec-based mining engineer with more than 30 years of underground and open-pit experience spanning operations, projects and senior leadership roles across the Americas. Most recently he was the mine general manager at First Majestic Silver Corp. and previously served as underground mines director at Calibre Mining and general manager with Lundin Gold Inc. at the Fruta del Norte mine in Ecuador, following a period as principal of GB Consulting

Value Pathways

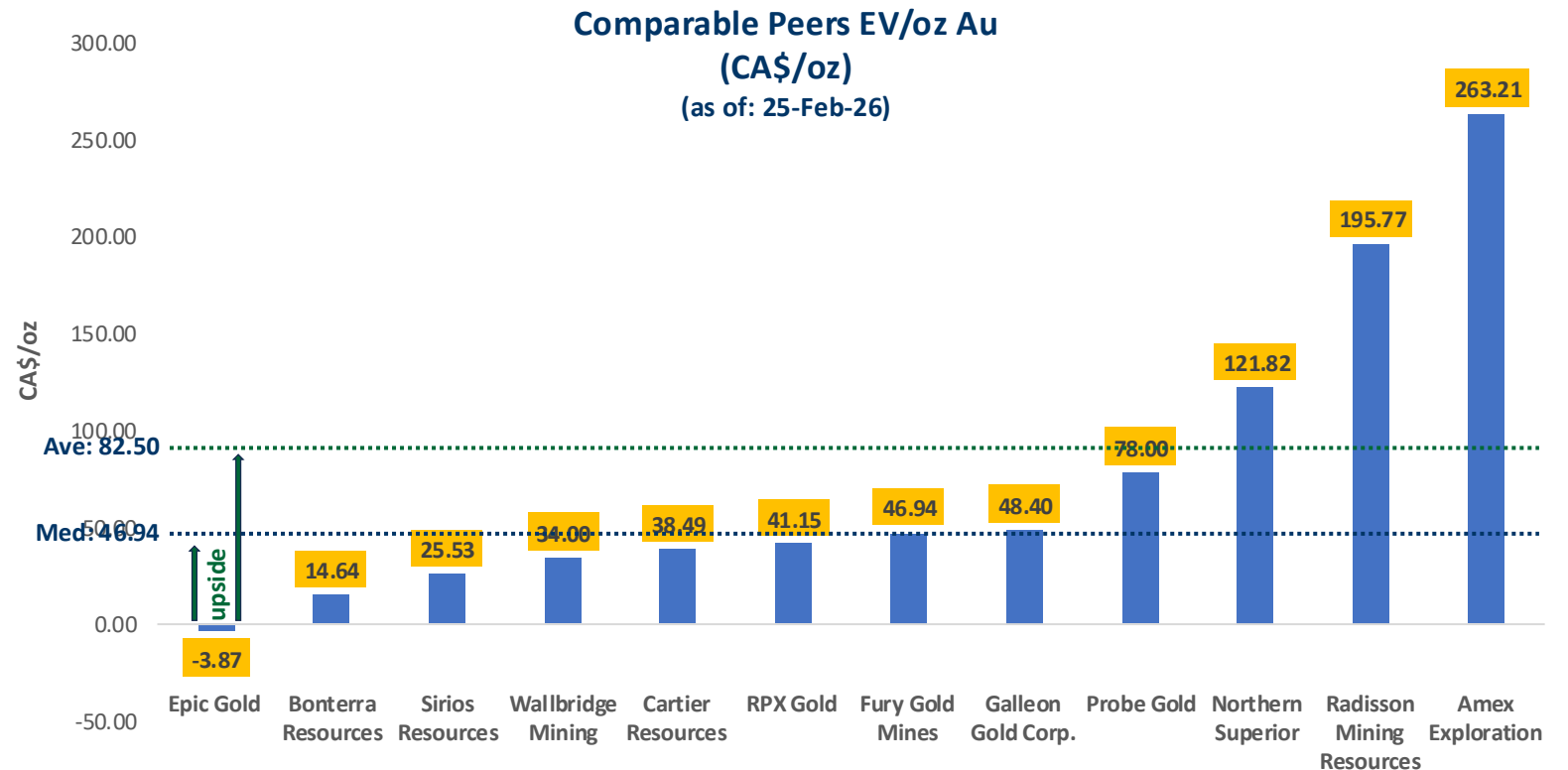
1. EV/oz - Peer comparisons

2. Resource Growth

- Exploration/Discovery
- Acquisitions

3. Monetize non-core assets

- True Grit
- Mt Peyton



Value Proposition

1. Cash = Optionality

~C\$15M cash & equivalents;

Drill + do deals without dilution

Why it matters: Cash buys time and leverage

2. Tier-1 Canada Focus (QC + ON)

Clear rules + transparent permitting

Infrastructure, mills, services, talent

Why it matters: Lowers jurisdiction risk

3. Asymmetric Exploration Upside

680Koz resource base

District-scale targets; multiple shots

Cash supports downside valuation

Why it matters: More upside than downside

4. Team That Executes

Proven financings + deal structuring

Technical depth in Abitibi-style systems

Why it matters: Execution > geology in juniors

5. Multiple Catalysts

Drill / JV / spin-out / sell

Why it matters: Not a single-bet story

6. Timing Tailwinds

Gold supported by geopolitics, CB buying, tight supply

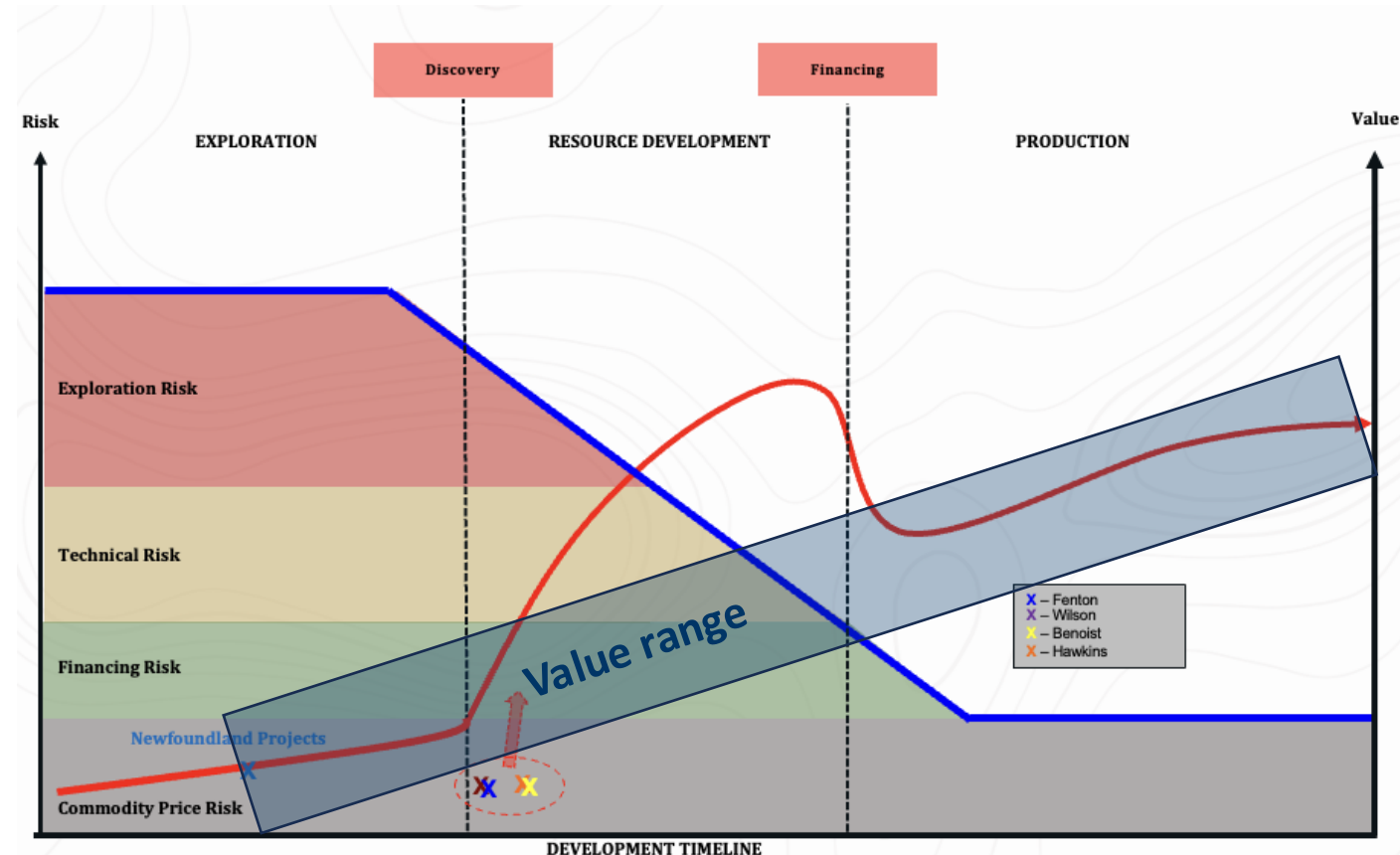
Deploy capital into weakness

Why it matters: Best entries come before sentiment turns

Summary

EPG is a Company positioned for growth

✓	Market & Timing
✓	Quality Project(s)
✓	Capital & Access to it
✓	Experience & Expertise
✓	Value Pathways
✓	Attractive Valuations



Epic Gold Corp

52 Church Street

Toronto ON M5C 2B5

Tel: +1 (778) 819-2708

Email: investors@epicgoldcorp.com