



EPIC GOLD  
CORP

# VALUE CREATION THROUGH DISCOVERY AND STRATEGIC TRANSACTIONS

CSE:EPG | OTCQB:NFLDF | FSE:634

# DISCLAIMER

This Presentation contains forward-looking statements that involve risks and uncertainties, which may cause actual results to differ materially from the statements made. When used in this document, the words "may", "would", "could", "will", "intend", "plan", "anticipate", "believe", "estimate", "expect" and similar expressions are intended to identify forward-looking statements. Such statements reflect our current views with respect to future events and are subject to such risks and uncertainties. Many factors could cause actual results to differ materially from the statements made, including those factors discussed in filings made by us with the Canadian or American securities regulatory authorities. Should one or more of these risks and uncertainties, such as results of current exploration programs, the general risks associated with the mining industry, the price of gold and other metals, currency and interest rate fluctuations, increased competition and general economic and market factors, occur or should assumptions underlying the forward-looking statements prove incorrect, actual results may vary materially from those described herein as intended, planned, anticipated, or expected. We do not intend and do not assume any obligation to update these forward-looking statements. Potential shareholders are cautioned not to put undue reliance on such forward-looking statements. Scientific and technical information has been reviewed and approved by a Qualified Person (as defined by NI 43-101). This presentation includes disclosure of 'historical estimates' as defined in NI 43-101. These are not current mineral resources and should not be relied upon as such.

# OVERVIEW

## Value Creation Through Discovery and Strategic Transactions

### Cash-backed valuation

- Strong treasury supports downside / provides strategic optionality
- Positioned to invest in quality assets

### Portfolio in proven gold belts

- Four gold projects in Quebec and Ontario
- Infrastructure rich mining friendly jurisdictions

### 680 Koz historical resource base + upside

- Multiple targets with repeatable signatures
- Resource growth + new discovery leverage

### Systematic targeting

- Mineral systems framework + modern geophysics
- Drill-ready target inventory across the portfolio

### Multiple Value Creating Pathways

- Discovery drilling, Strategic M&A, Asset monetization, Partnerships/JVs
- Not dependent on a single binary outcome

### Highly Attractive Valuation

- Trading at less than Cash & Equivalents (MC: \$10.5Mi : \$11-14Mi Ca & Eq)
- Current EV/oz \$0/oz (Peer average ~\$50/oz) +/- \$35Mi unrealized value

# PILLARS

## Key Features and Strategy

### Right Market & Right Timing

01

- Gold entering 5-year price reset phase (~\$5,000/oz)
- Strong demand led by central banks
- Supply is steady - recycling less responsive than expected

### Quality Projects

02

- Tier 1 jurisdiction
- The right target (size, grade, ability to deliver results)
- Solid base to build on (Engineering study, MRE, well defined target)
- Financeable (Demonstrable economics, clear path to mining)

### Right People

03

- Decades of experience in all aspects of exploration, development and mining
- Decades of experience in capital markets
- Years of experience with ESG
- Incentivized to succeed

# PILLARS (continued)

## Key Features and Strategy

---

### 04 Access to Capital

---

- \$2.6 Million in **Cash**
- \$8 Million in **NFG shares**
- \$3 Million in **NFG shares (contingent)**
- 20% owned **by institutions**

### 05 Multiple Value Creating Pathways

---

- New discoveries with the drill
- Resource expansion and re-modeling
- Strategic M&A opportunities
- Monetize existing assets

### 06 Highly Attractive Valuation

---

- Trading at less than Cash & Equivalents (MC: \$10.5: \$11-14Mi Ca & Eq)
- Current EV/oz \$0/oz (Peer median ~\$50/oz) +/- \$35Mi unrealized value
- Historical Gold Resources of 680,000 oz\*
- Multiple re-rating catalysts ahead

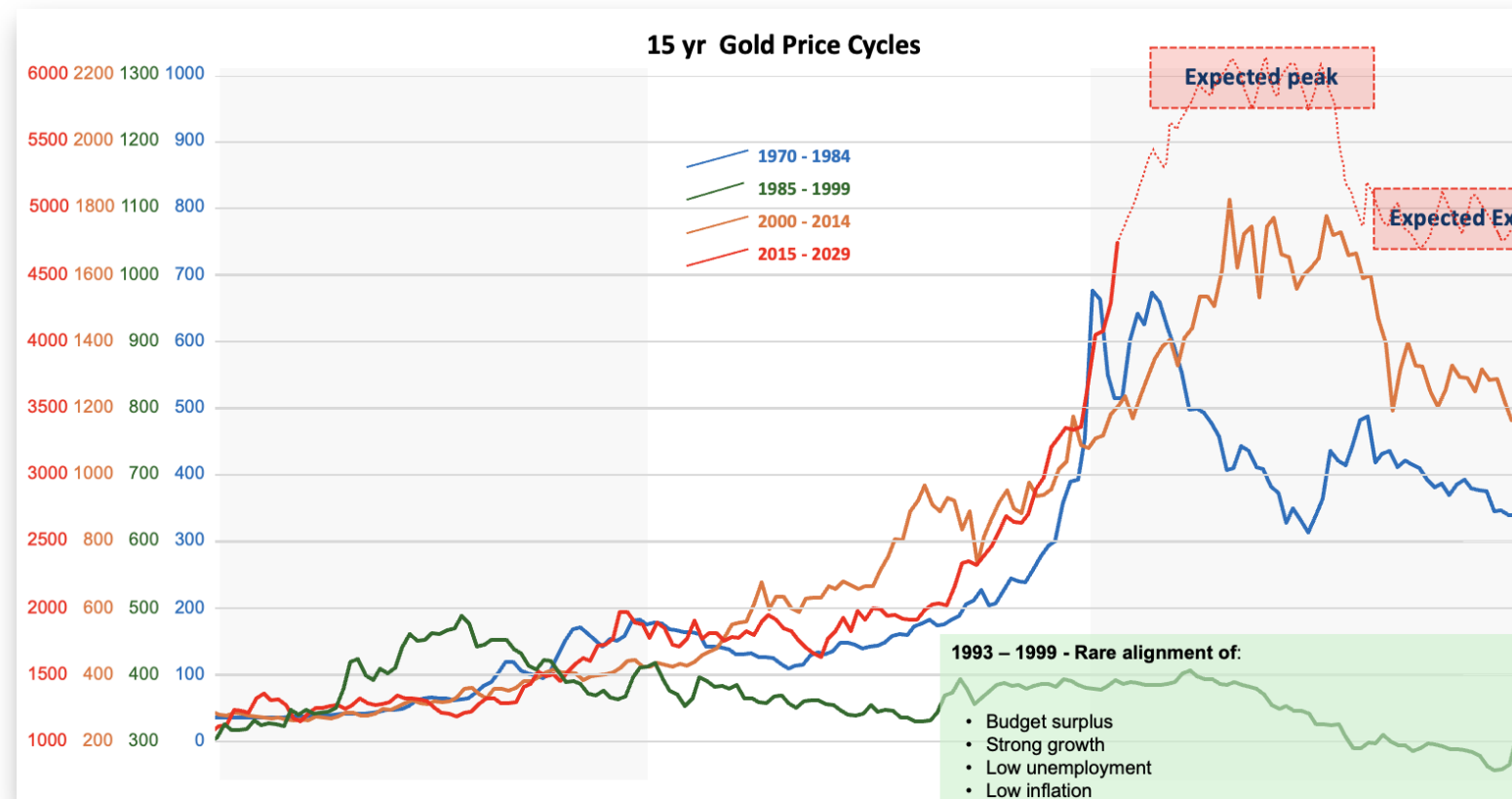
# MARKET & TIMING

- Gold tracks money supply just not in a straight line
- The markets need time to adjust and realize, and the chart shows that 15 years is the timeline for adjustments to occur
- Given the gold price reset underway we need to change the way we think:
  - 3.0 g/t cut-off at \$1500/oz Au is the same as 1.0 g/t cut-off at \$4500/oz Au
- Average underground grades for ROM:
  - \$225/tonne at \$4500/oz = 1.5 g/t
  - \$225/tonne at \$1500/oz = 4.5 g/t
  - \$225/tonne at \$1200/oz = 5.8 g/t
  - \$225/tonne at \$400/oz = 17.5 g/t

**GETTING USED TO IT**  
buyers = sellers

**NOTHING HAS CHANGED**  
buyers > sellers

**EVERYONE REALIZES**  
buyers >> sellers



From Cipher Research

# MARKET & TIMING

- In May, EPG traded at only a modest premium to cash
- The addition of a new project was quickly reflected in the market
- Announced monetization of Newfound assets drove a further re-rating
- Rising gold prices and NFG share appreciation leave EPG trading below cash & equity value, with the current portfolio effectively valued at zero





# CAPITAL STRUCTURE

AS OF APRIL 28, 2026

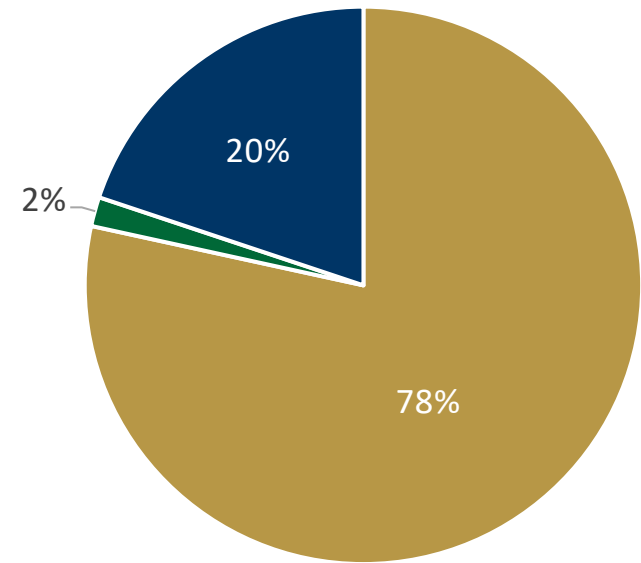


<b>CASH &amp; EQUIVALENTS</b>	CASH	\$2.6M
	SECURITIES	\$8.0M
	CONTINGENT	\$3.0M

**\$10.5M**  
MARKET CAP

## SHARE STRUCTURE

■ Retail Float   ■ Management & Insiders   ■ Institutional



**210M**  
SHARES  
OUTSTANDING

**0**  
WARRANTS

**8.3M**  
OPTIONS

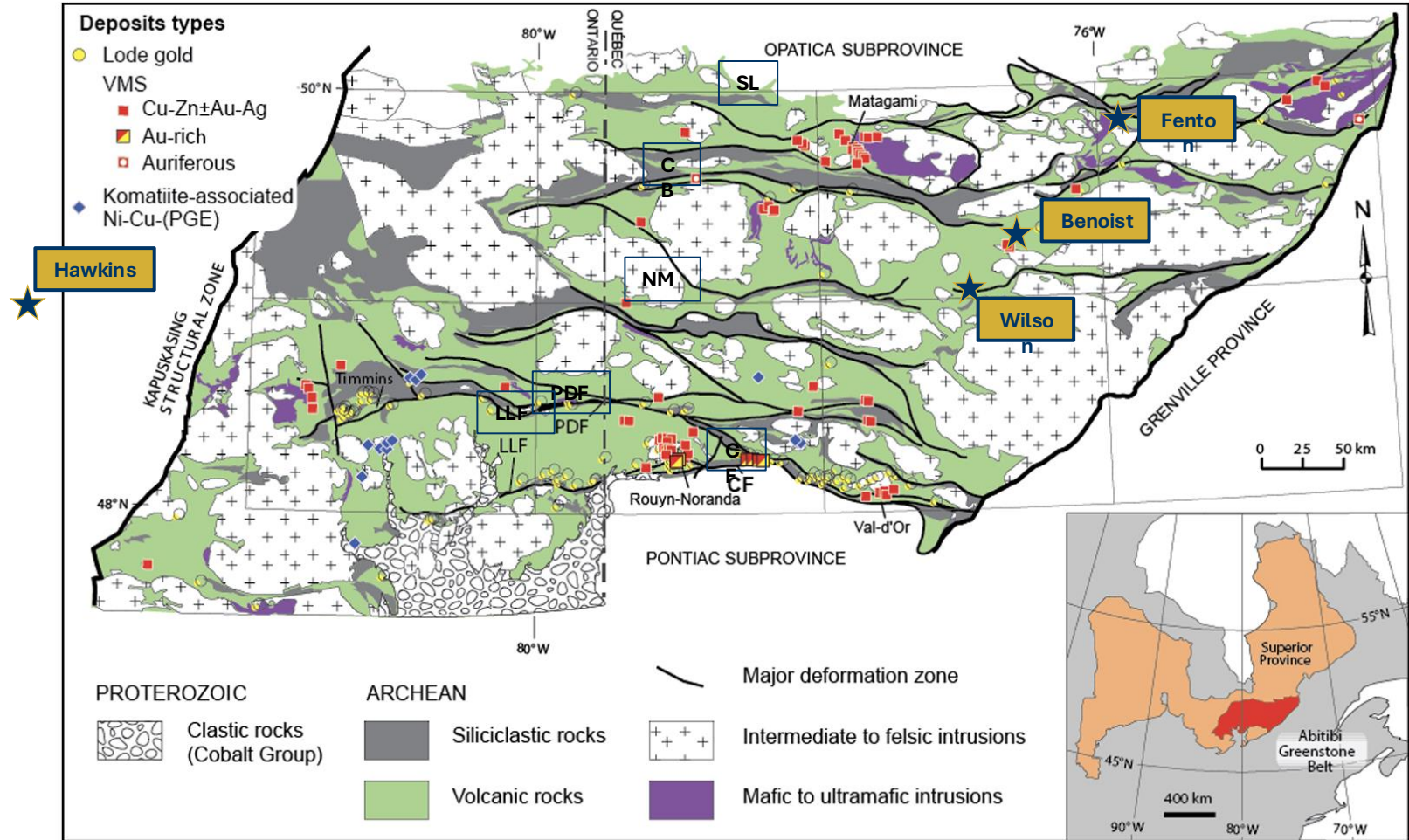
**218M**  
FULLY  
DILUTED

**750K**  
SHARES/DAY  
Avg. Volume/Day

**\$0.045-\$0.080**  
52 WEEK  
LOW-HIGH

# PROJECTS

- World-class orogenic gold district in Ontario-Quebec (includes VMS and base metals)
- One of the largest and best-preserved Archean (2.6-2.8 billion years old) greenstone belts
- Over 100 years of continuous production
- Over 200 million ounces of gold produced
- Continuous new discoveries along most explored structures:
  - Destor-Porcupine Fault Zone
  - Larder-Lake Cadillac Fault Zone
- Exploration in the northeast has also been highly successful, despite receiving far less historical time and capital investment to date:
  - Normetal Fault Zone
  - Casa Berardi Fault Zone
  - Sunday Lake Fault Zone



# PROJECTS

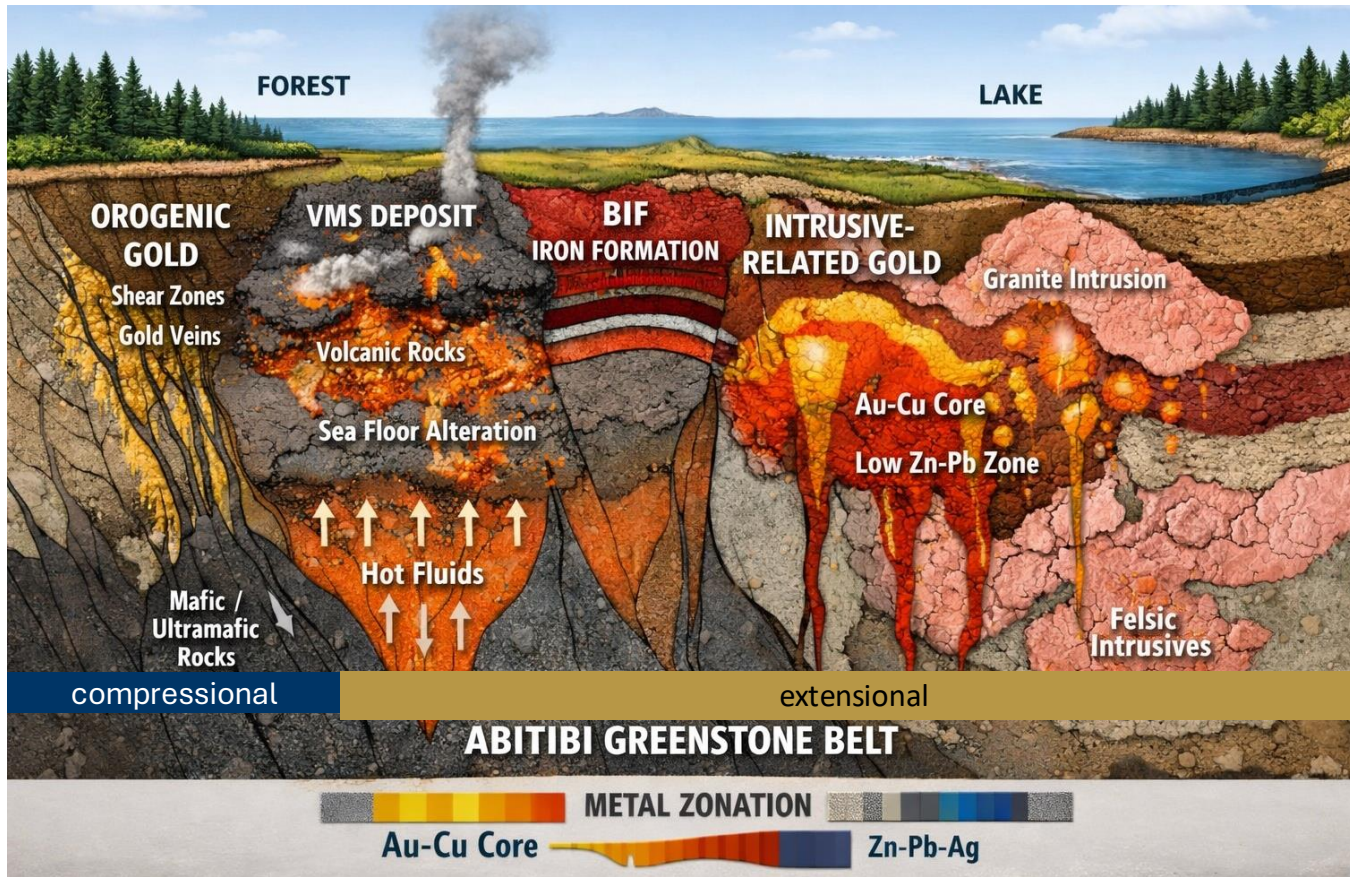


Schematic section of various deposits found in the Abitibi:

All have unique targeting features

Several deposits have characteristics of more than one type

Importance of understanding ore genesis and developing project specific targeting criteria



## Fenton

Orogenic/Intrusion

Structural remodification, broad sulphide stock +/- tourmaline

## Wilson

Orogenic/VMS

Structural control, Volcanogenic sulphides

## Benoist

Orogenic/VMS

Rhyolite dome complex, intense deformation corridors

## Hawkins

Orogenic/VMS

Deformation, faults/shears, quartz veining, pathfinder elements

# PROJECTS

SIMILAR THEME ACROSS ALL OUR PROPERTIES:

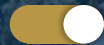
FENTON | WILSON | BENOIST | HAWKINS



**Mining Friendly Jurisdiction**



**Reputable Gold Resource**



**Significant Upside**



**Financeable:**



- Demonstrable Economics
- Clear path to advancement
- Size and grade potential to justify CAPEX
- Proximity to existing infrastructure



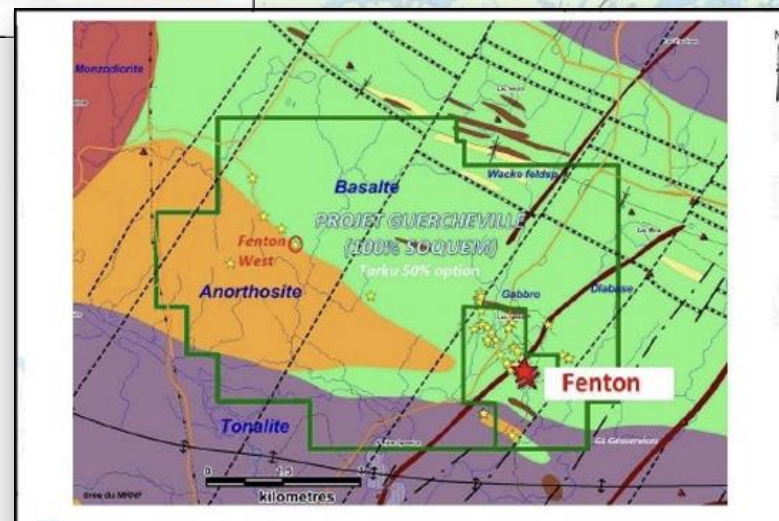
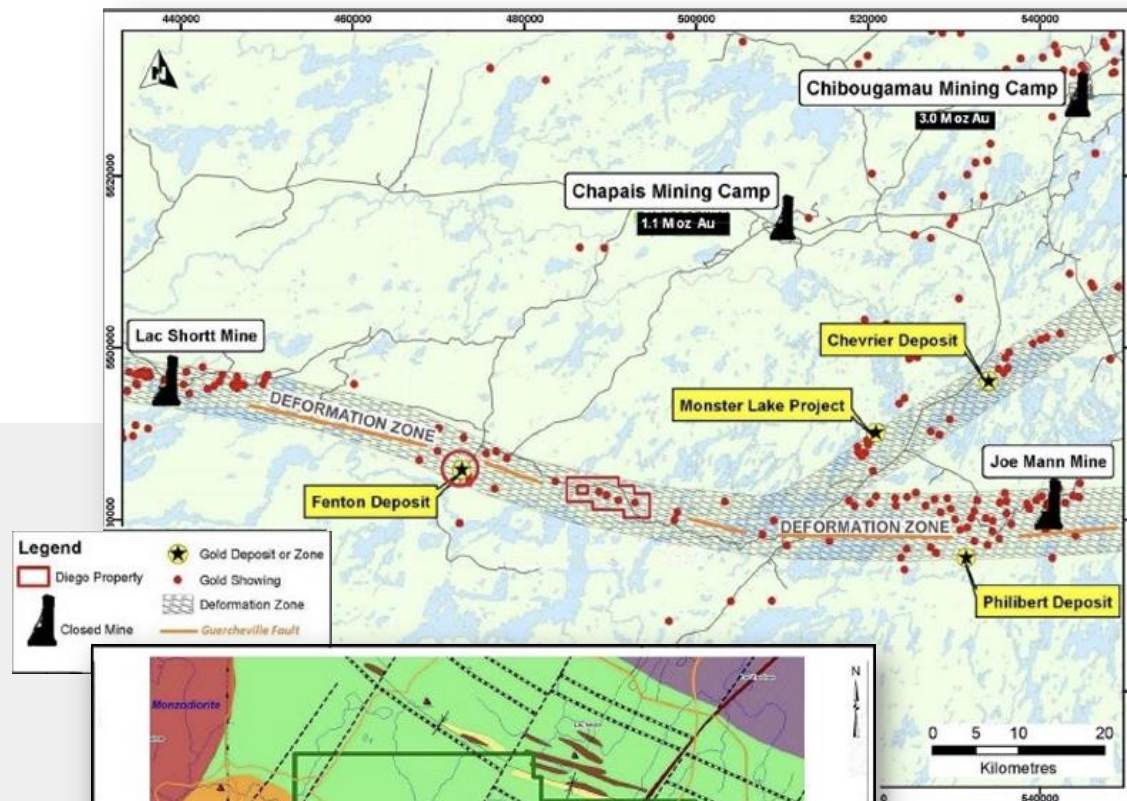
# FENTON GOLD PROJECT



**Chapais, Québec**  
(Chibougamau district, Abitibi greenstone belt)

## Location & System Context

- Regional control: Guercheville deformation corridor (structural focus for gold)
- Infrastructure advantages: established mining region, road access, services nearby
- Abundant processing capacity in close proximity
- Why it matters: efficient exploration + future development optionality



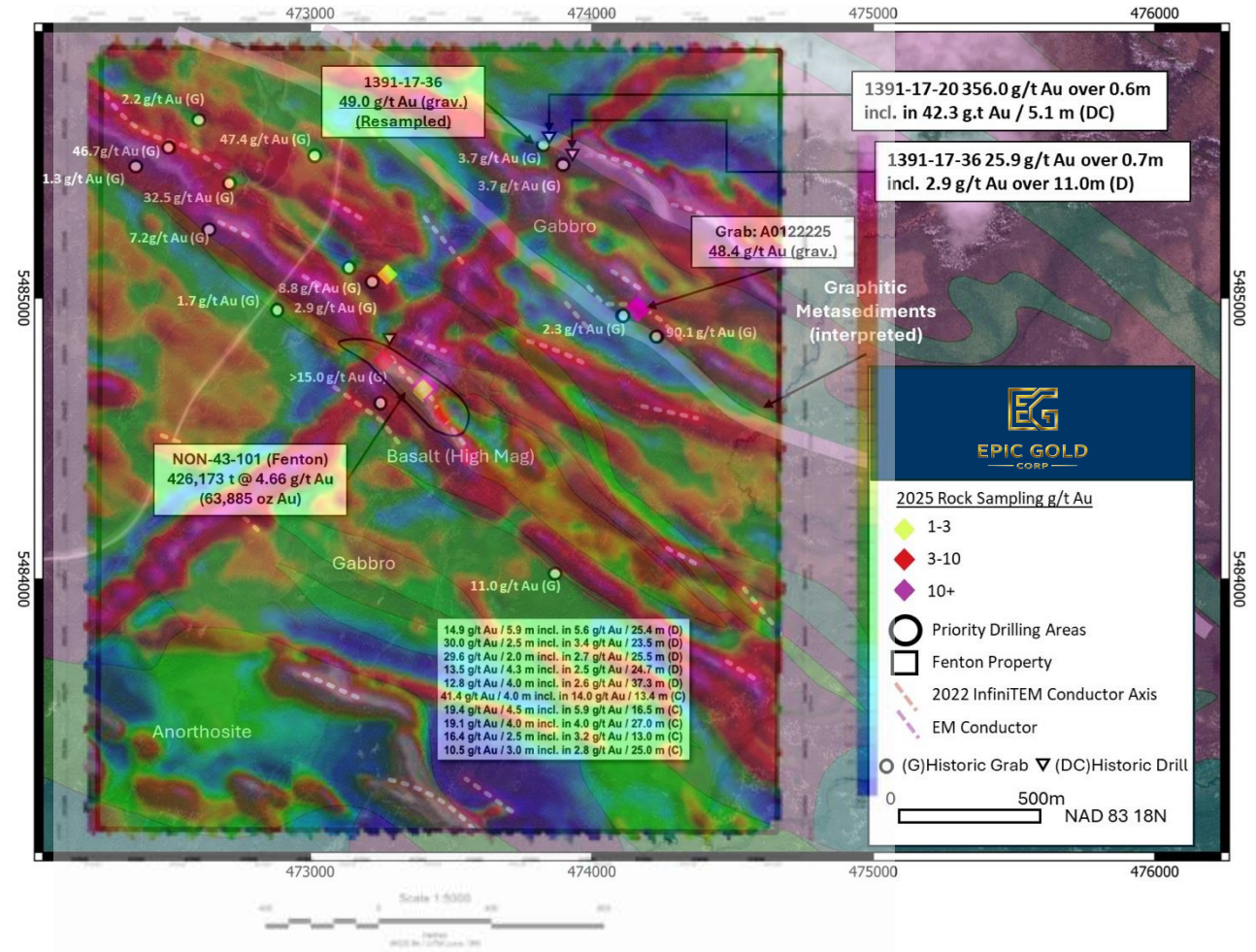
**Source:** modified from Cartier Resources Inc.: SOQUEM  
Tarku Resources Inc.

# FENTON GOLD PROJECT



## Geophysics & Targeting

- High-resolution drone magnetics + VLF-EM (2025) with LiDAR terrain support
- Results highlight continuous belt-parallel magnetic zones and key fold/shear controls
- Mineralization is focused along magnetic gradients / corridor margins (competency contrasts)
- Priority drill targets defined by overlap of Mag + VLF + historical IP/resistivity + mapped structure

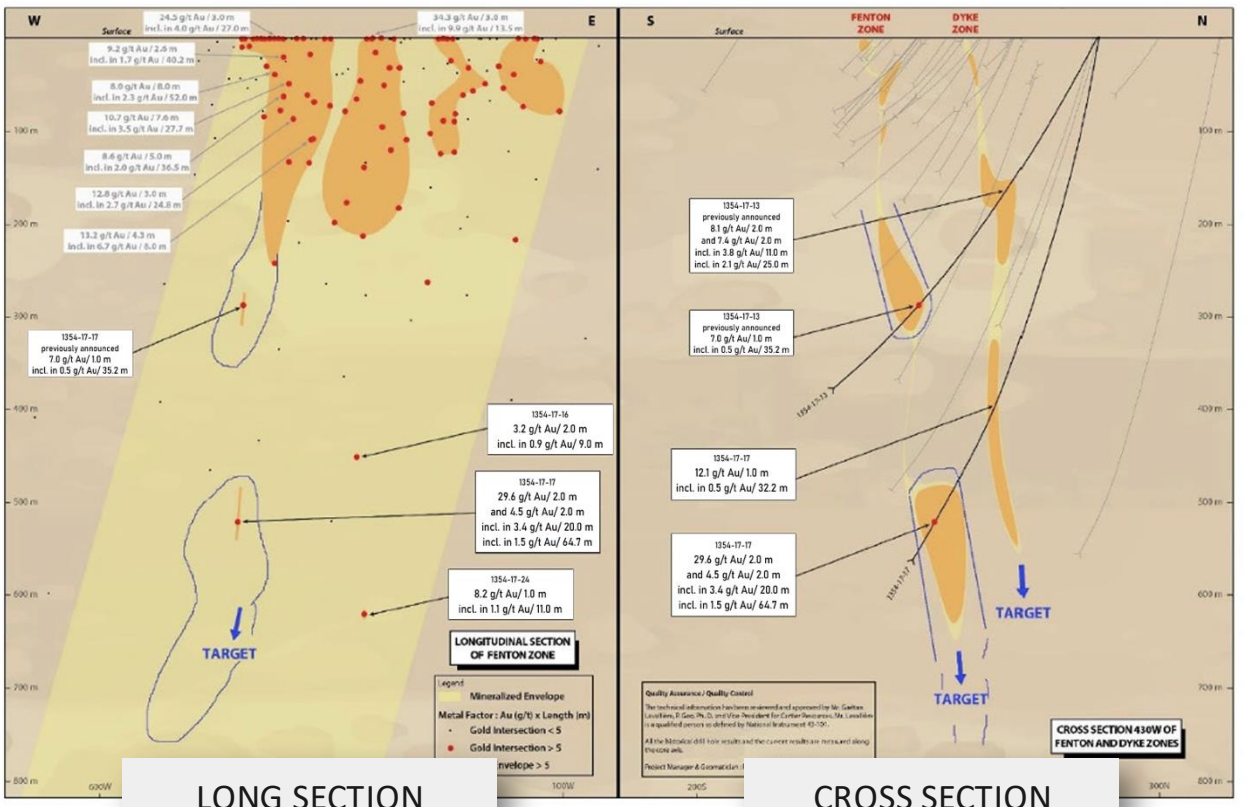


# FENTON GOLD PROJECT



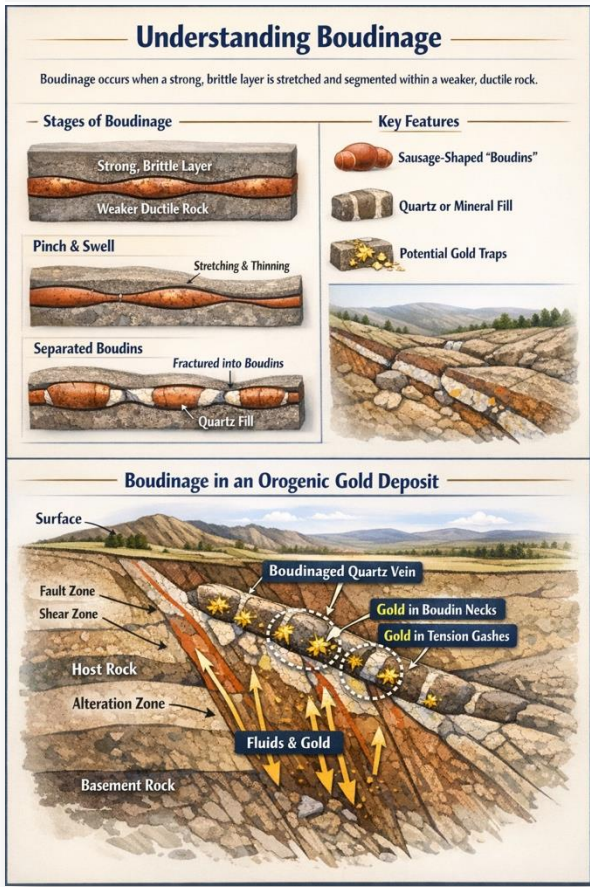
## Issue

- Explain the misses
- Discontinuous results in historical drilling



## Theory

- Boudinage
- Repetition of Au zones



## Evidence

- Micro boudins in core

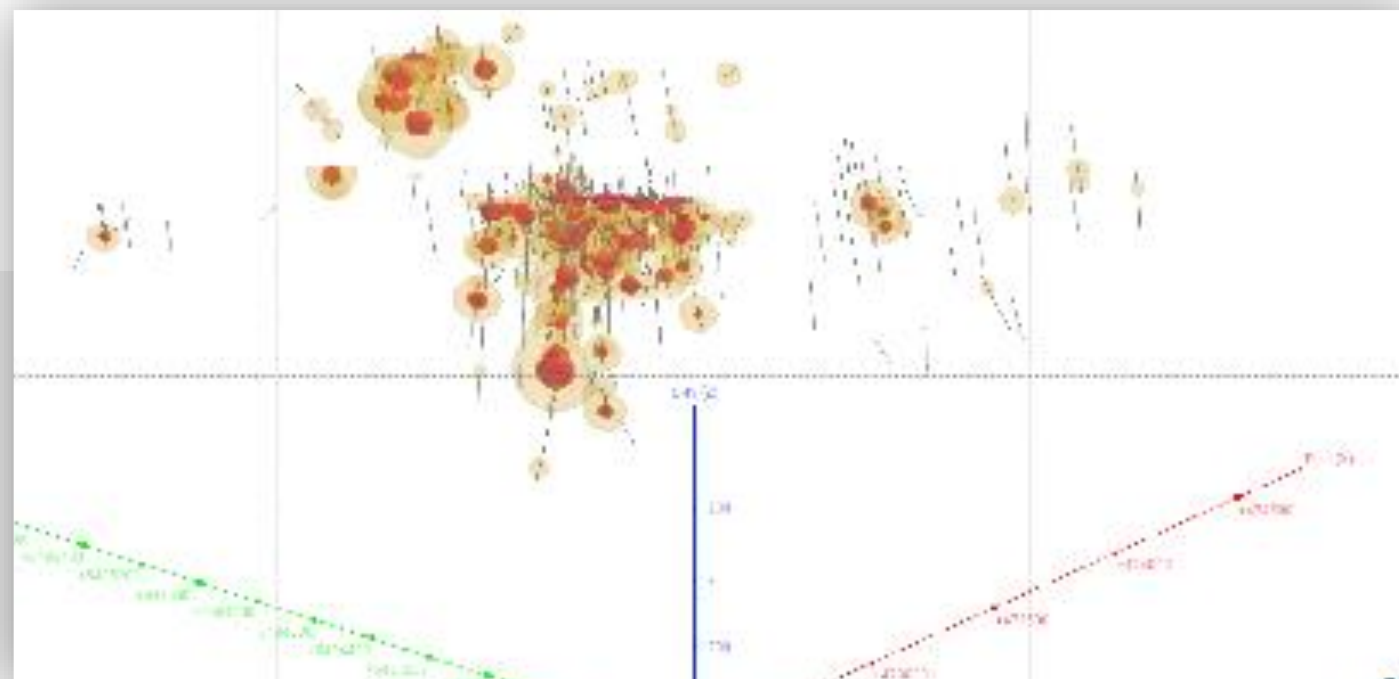


# FENTON GOLD PROJECT

## Resource & Upside

- Historical resource (2000): 63Koz, 428KT @ 4.66 g/t Au\*
- 11,000 m (25 DDHs) since MRE
- Internal sensitivity calculations considering current Au price and subsequent drilling indicates potential for bulk mineable target
- 2026 work plans designed to identify additional Fenton-like targets

*\*Historical Estimate: a Qualified Person has not done sufficient work to classify the historical estimate as a current mineral resource; it should not be relied upon as current*



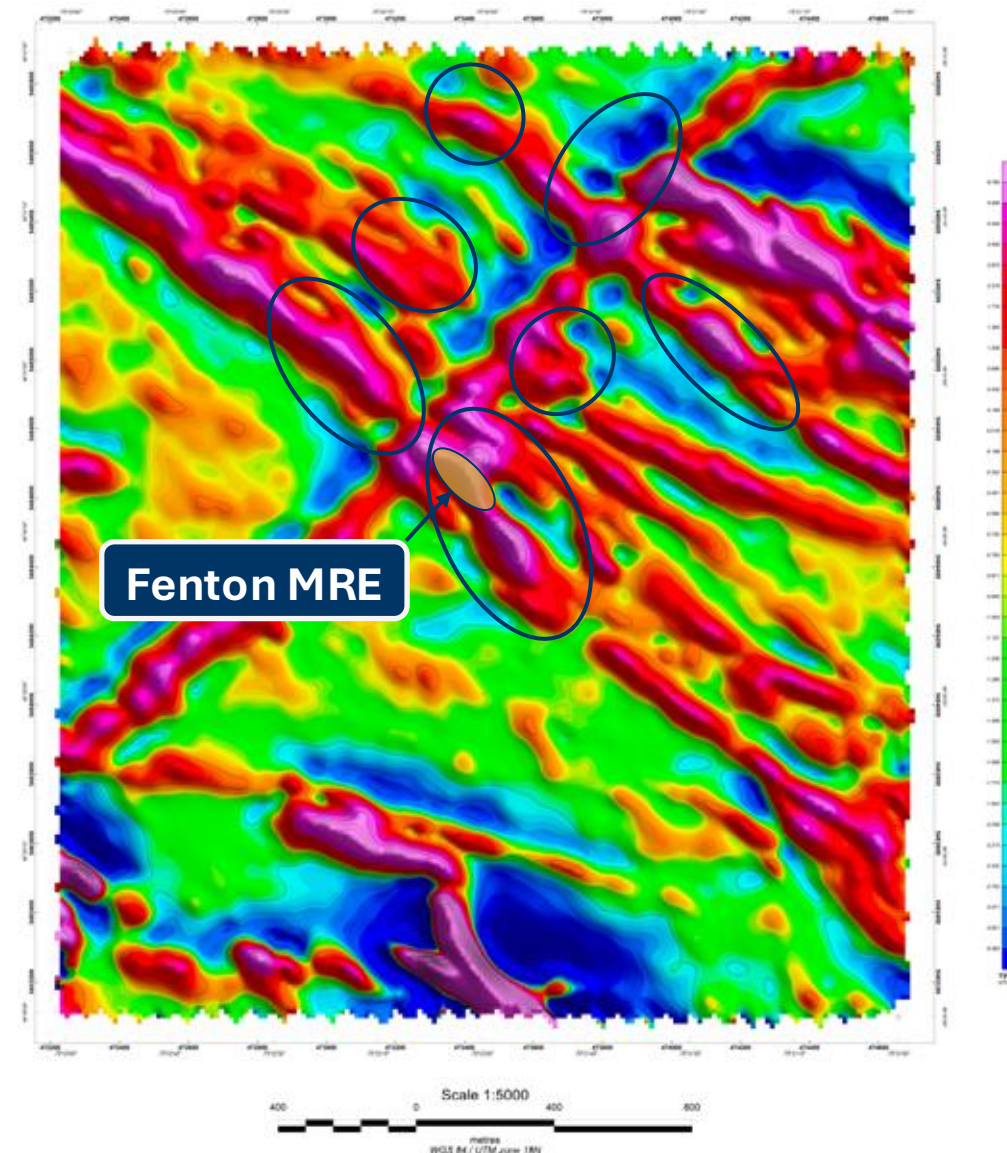
		TOTAL			ABOVE 50m	
Category	Cut-off	Tonnes (M)	g/t Au	Koz	Tonnes (M)	Koz
Target	0.10	27.77	0.82	730.01	2.05	145.44
Target	~0.20	24.71	1.16	542.62		
Target	0.50	3.06	1.90	187.38	0.35	57.16
Target	0.75	1.70	2.49	136.07	0.22	47.51
Historical MRE	2.00	0.43	4.66	63.89		

# FENTON GOLD PROJECT



## Current Drill Program

- Designed to test 6 Fenton-like geophysical signatures, most with identified Au mineralization, to identify additional targets for resource development
- A total of 10 holes and 4,256 metres recently completed
- QA/QC delays with assay results – lab has identified coarse gold issue – samples resubmitted for gravity and metallic screen assay



# WILSON GOLD PROJECT

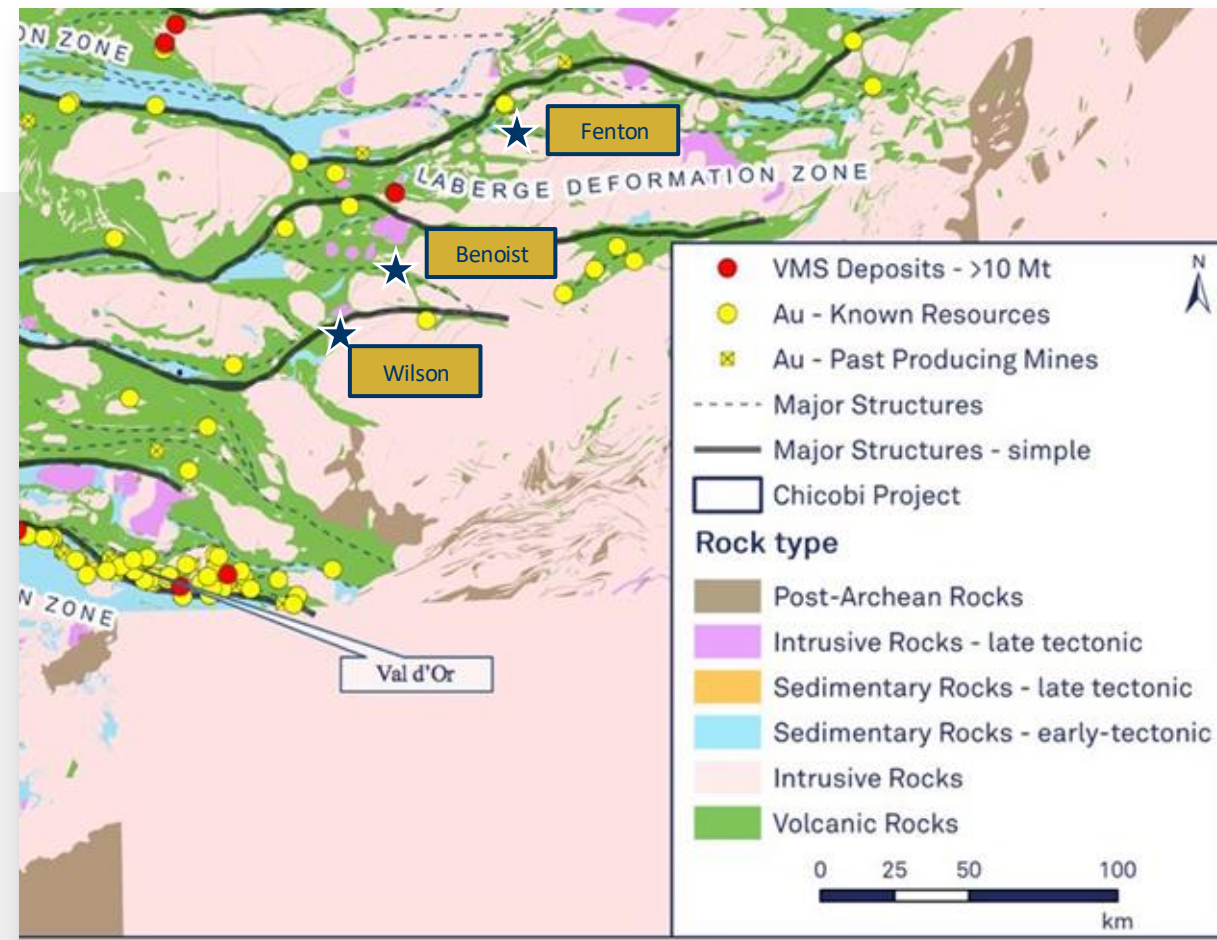


## Chapais, Québec

(Chibougamau district, Abitibi greenstone belt)

## Location & System Context

- Abitibi Greenstone Belt (Québec) - Wilson is situated in the North Volcanic Zone, underlain by Archean volcanic rocks of the Quévillon Group
- Property architecture is predominantly NE–SW, with steeply dipping units and belt-parallel structural trends across the project
- Big picture: Wilson is now interpreted as a single, structurally coherent gold system linking multiple zones into one property-scale framework (scale + depth vectors)
- Abundant processing capacity in close proximity

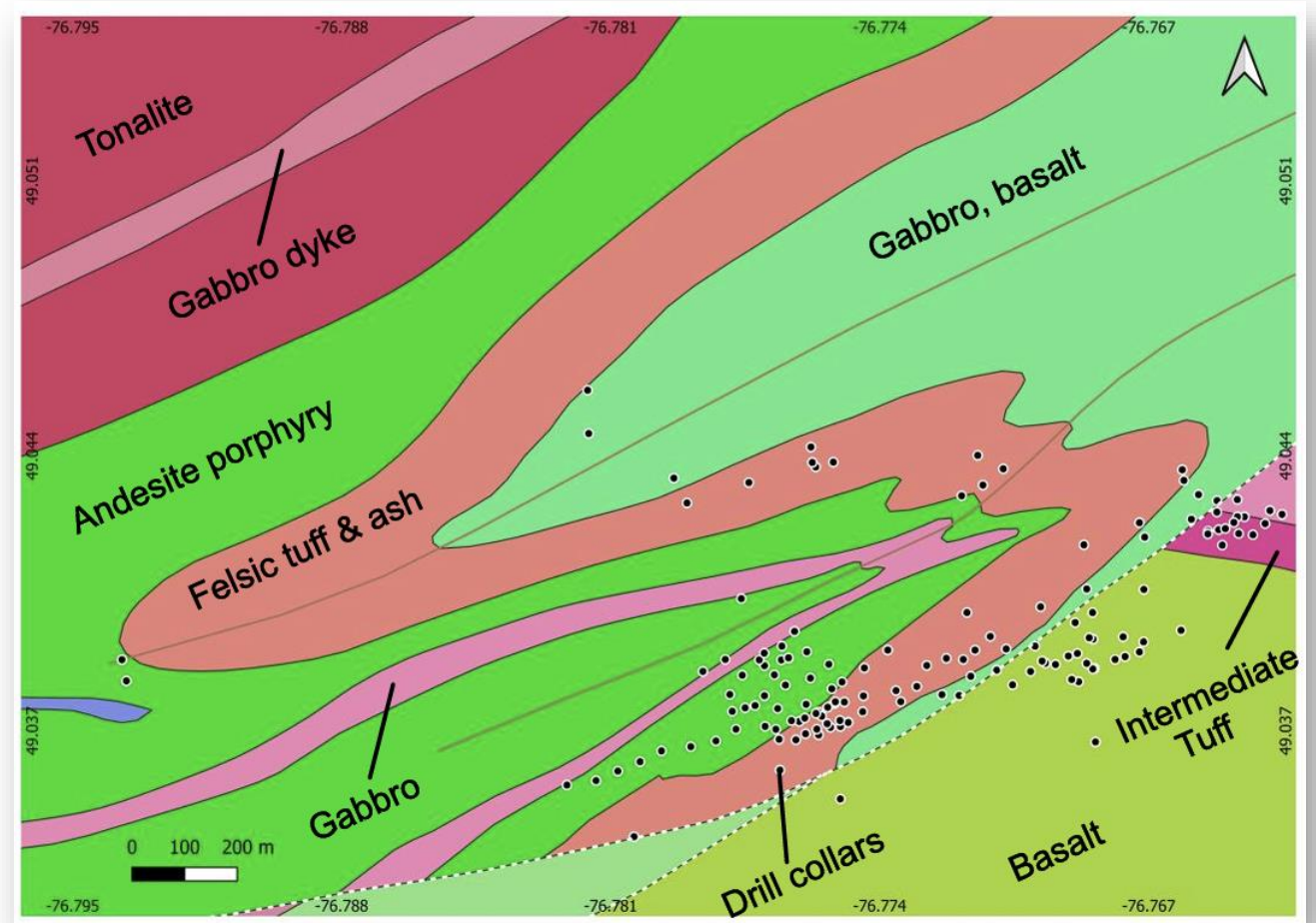


# WILSON GOLD PROJECT



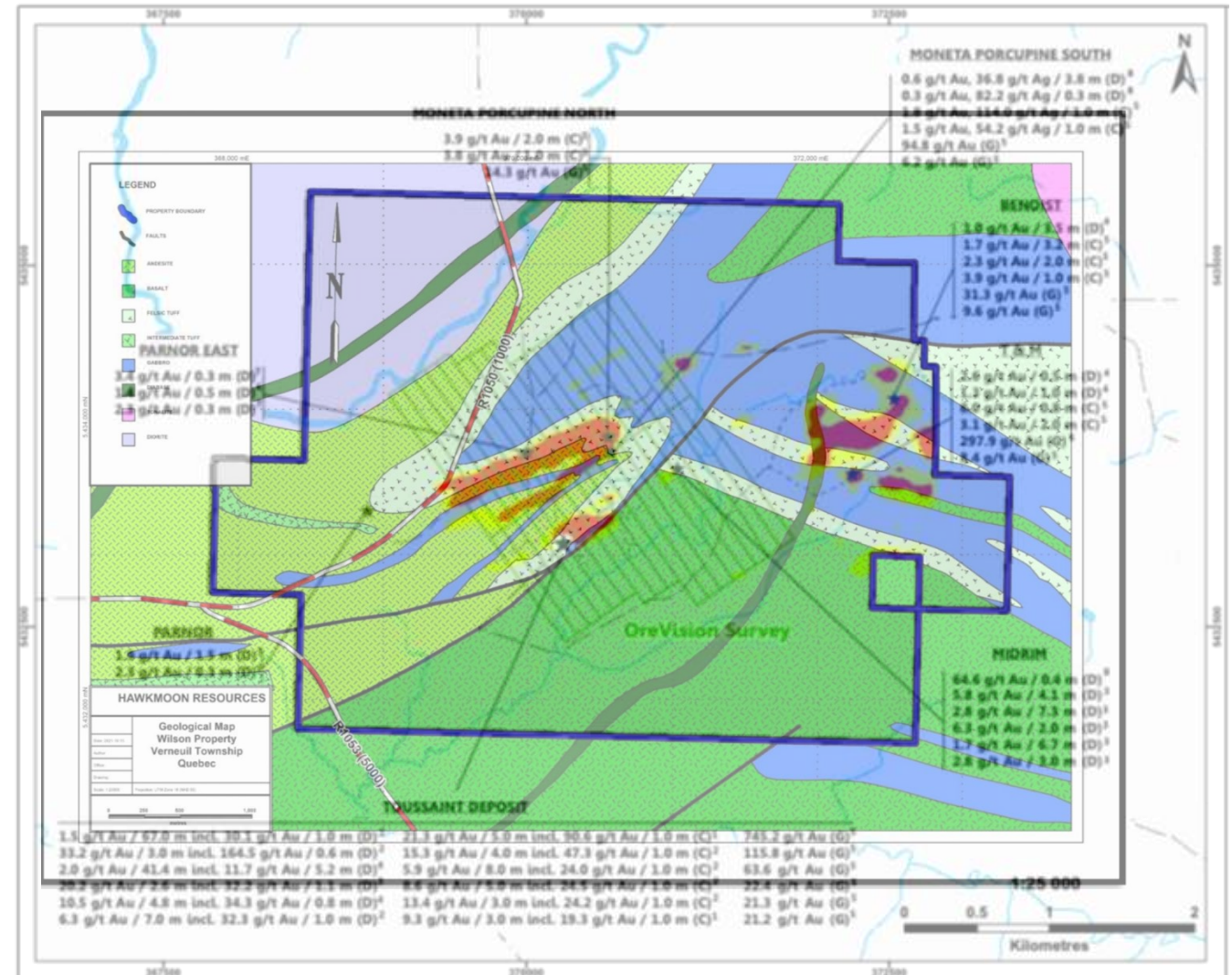
## Geophysics & Targeting (2025)

- Recent geological mapping and re-interpretation indicates tight folding and favourable geological contacts for hosting gold
- Drilling along contact between Felsic tuff and Andesites, and basalts supports VMS targets



# WILSON GOLD PROJECT

Showing	Highlights
Moneta Porcupine South	Drill hole: 3.8m @ 36.8 g/t Ag, Channels: 1.0m @ 114.0 g/t Ag, Grab: 94.8 g/t Au
Moneta Porcupine North	Channels: 2.0m @ 3.9 g/t Au, Grab: 14.3 g/t Au
Parnor East	Drill hole: 0.3m @ 3.4 g/t Au
Parnor	Drill hole: 1.5m @ 1.9 g/t Au

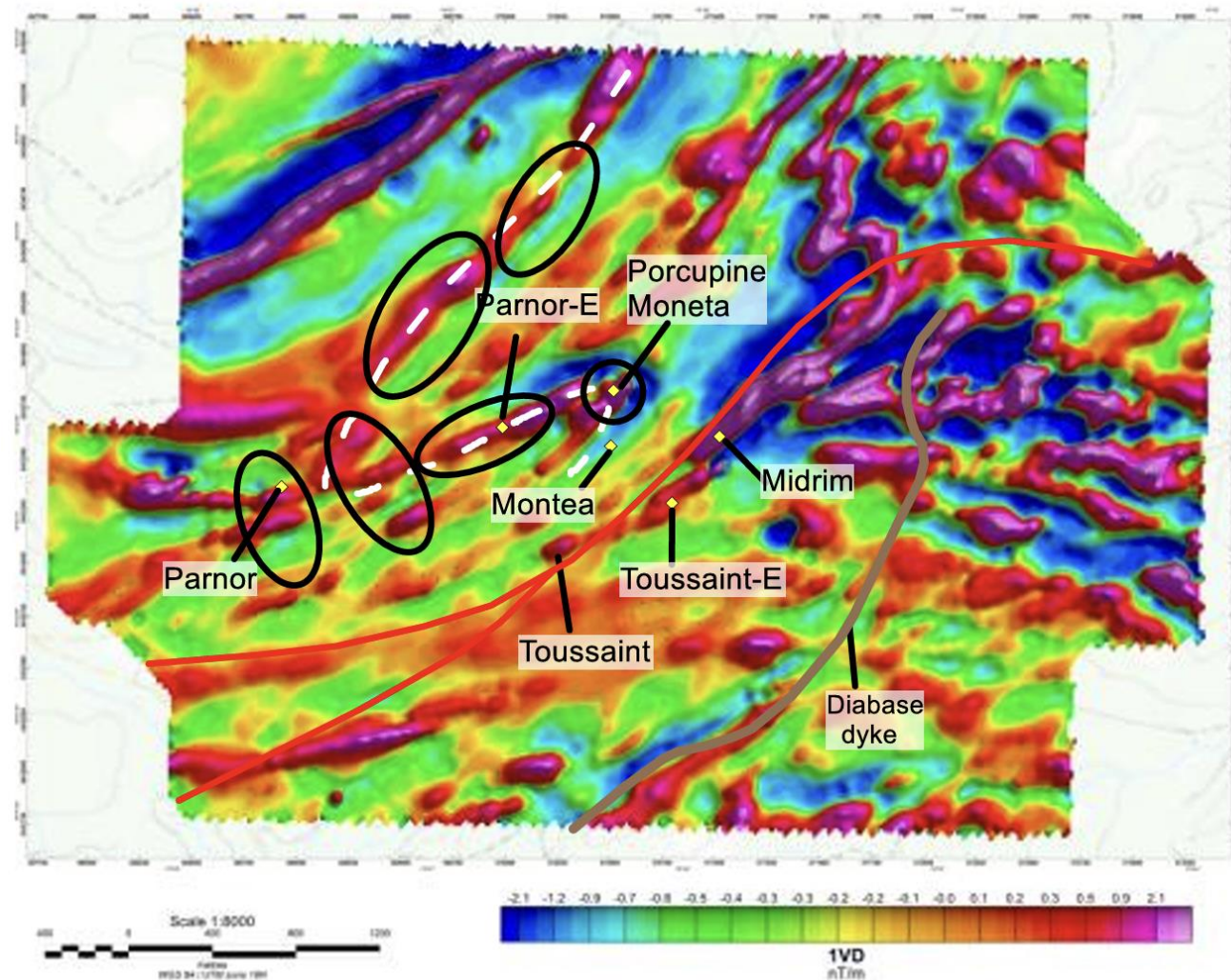


# WILSON GOLD PROJECT



## Geophysics & Targeting (cont'd)

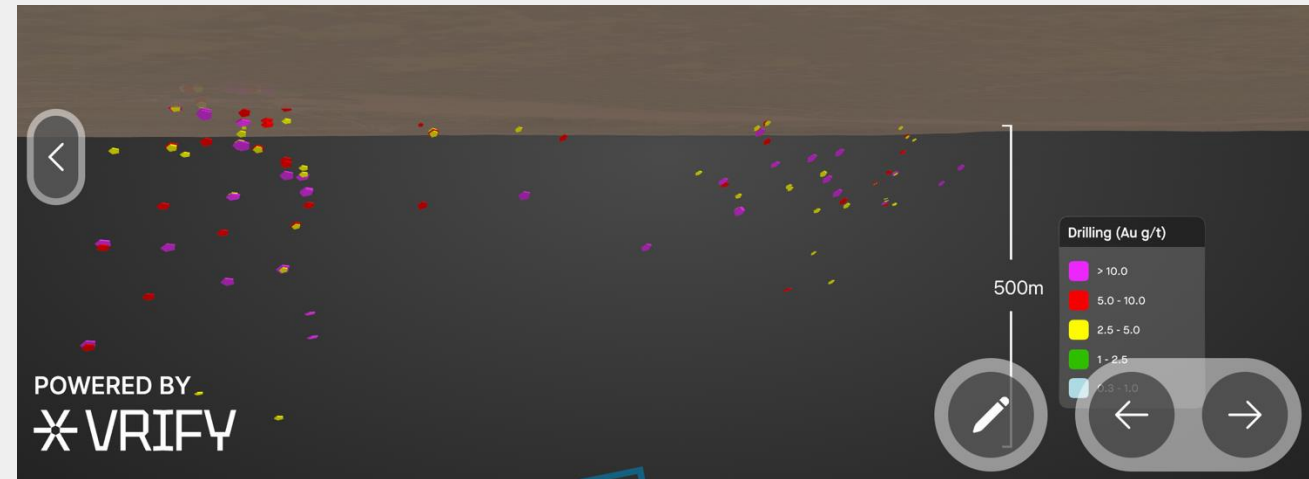
- High-resolution drone magnetics + VLF-EM (2025) with LiDAR terrain support: ~714 line-km Mag; ~351 line-km VLF at 50 m spacing.
- Results highlight continuous belt-parallel magnetic zones and key fold/shear controls
- Mineralization is focused along magnetic gradients / corridor margins (competency contrasts)
- Priority drill targets defined by overlap of Mag + VLF + historical IP/resistivity + mapped structure



# WILSON GOLD PROJECT

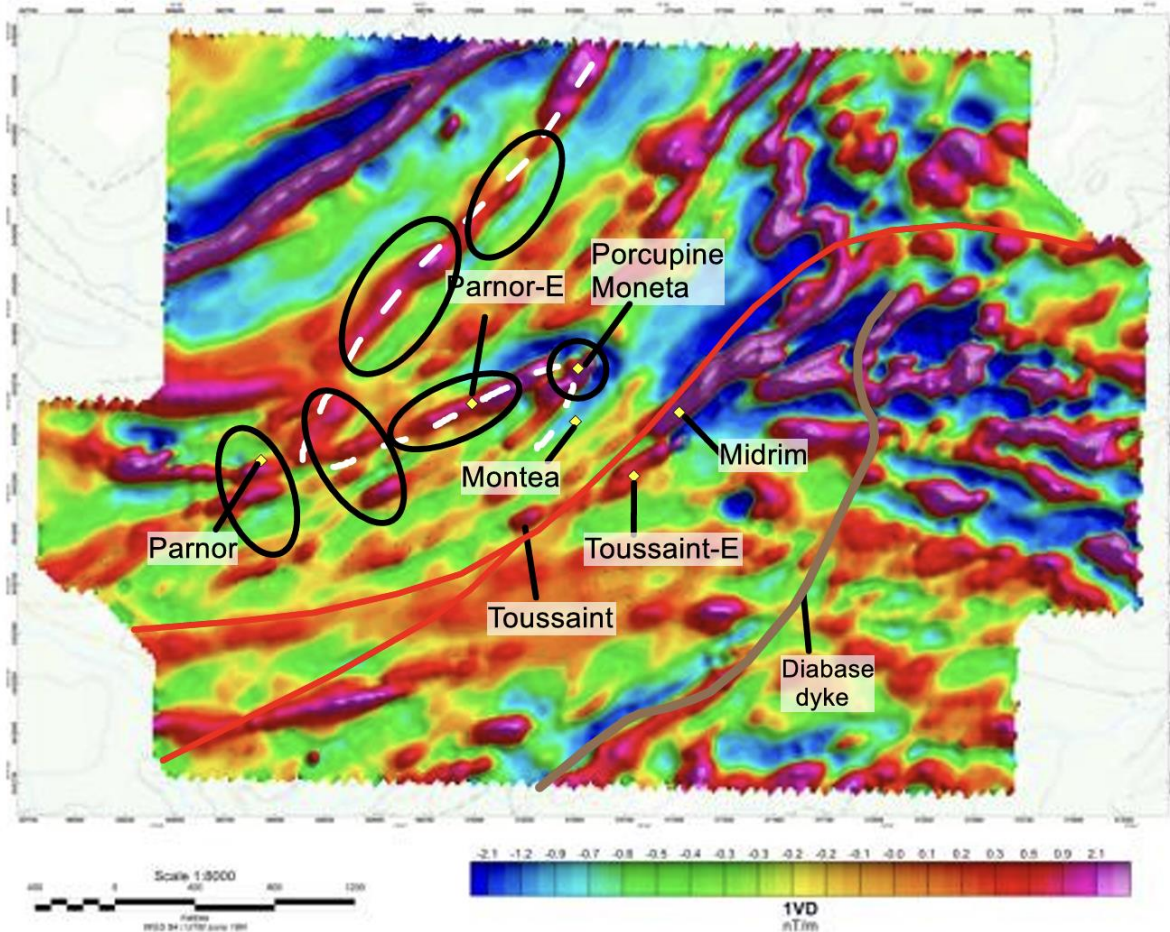
## Resource & Upside

- Historical resource (1997): 42.9Koz, 187KT @ 7.10 g/t Au\*
- 22,000m (92 ddhs) since MRE
- Internal sensitivity calculations underway considering current Au price and subsequent drilling indicates to explore potential for bulk mineable target
- 2026 work plans designed to identify additional Wilson-like targets along lithology and geophysical targets



*\*Historical Estimate: a Qualified Person has not done sufficient work to classify the historical estimate as a current mineral resource; it should not be relied upon as current*

# WILSON GOLD PROJECT



## Plans



Connect the dots



Geophysics confirms geology and shows previous showings follow lithological contact



Drilling along favourable horizon to identify targets to expand resources



Re-evaluate current MRE considering current Au price and subsequent drilling to determine potential for economic deposit

# BENOIST GOLD PROJECT

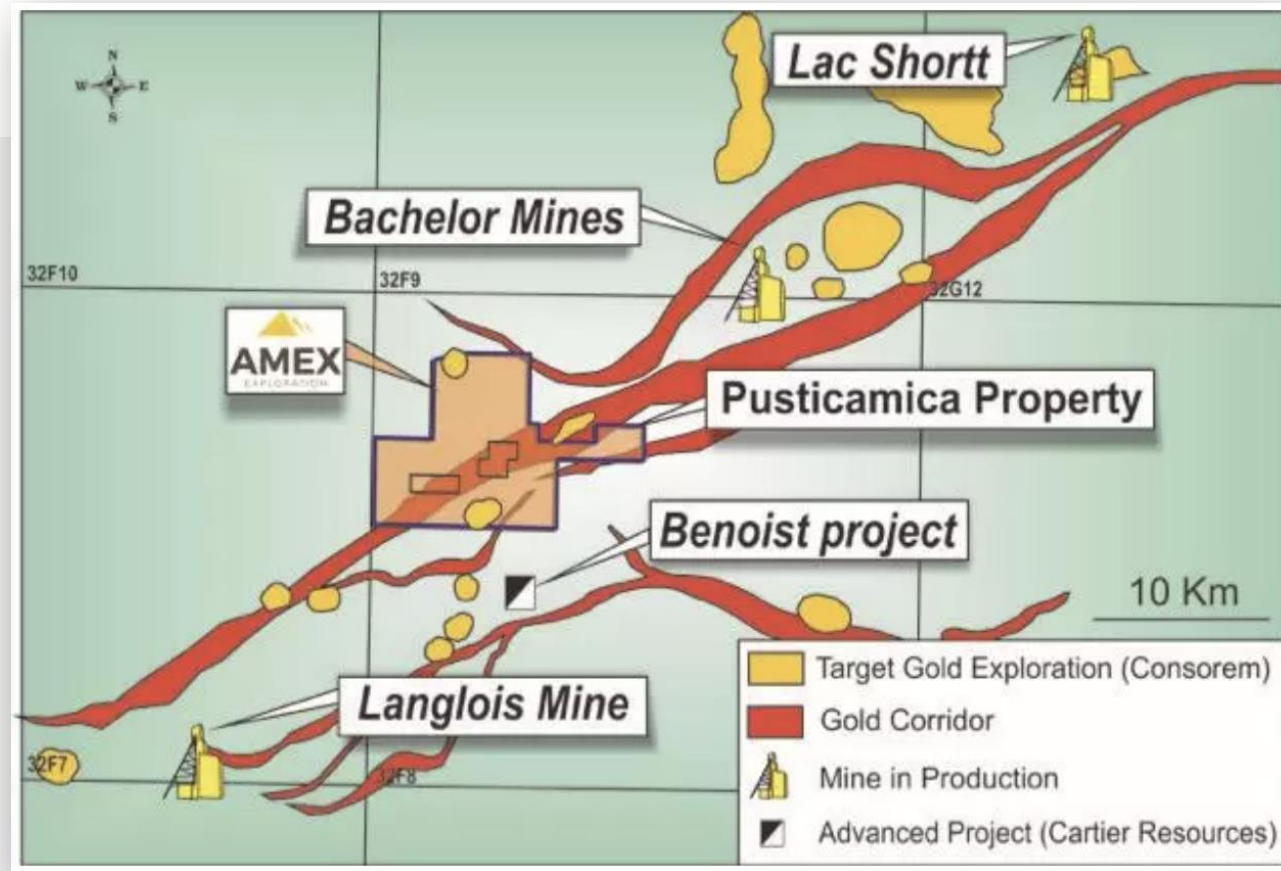


## Miquelon, Québec

(Lebel-sur-Quévillon area, Abitibi greenstone belt)

## Location & System Context

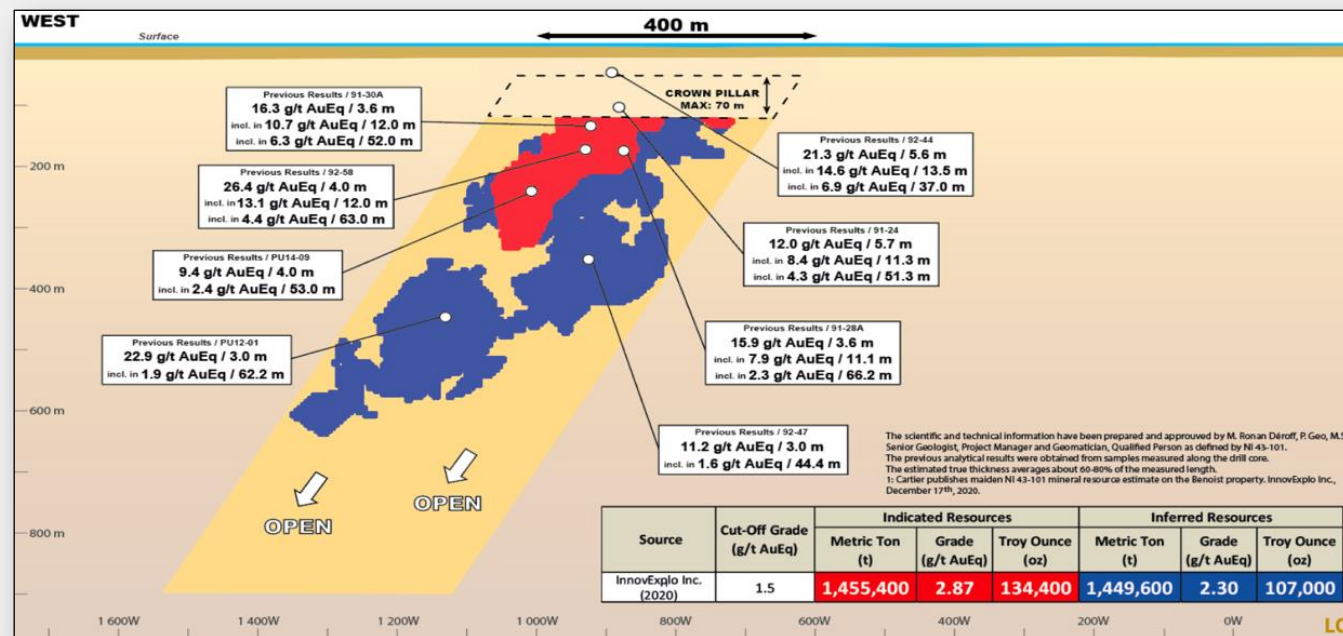
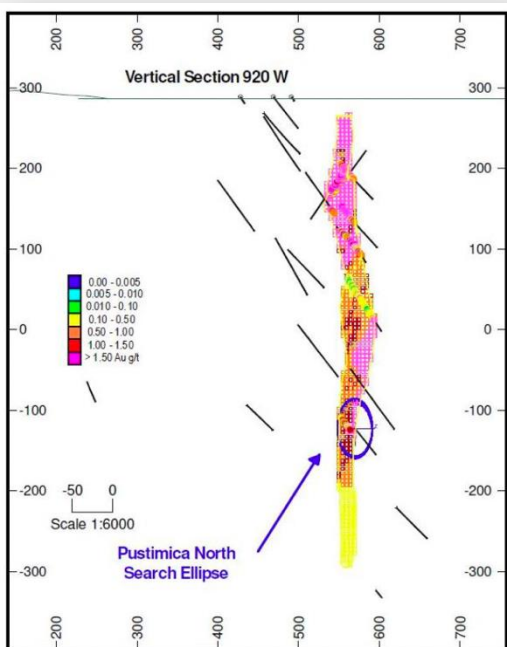
- Abitibi Greenstone Belt (Québec) - Benoist is situated in the NE-oriented volcano-sedimentary corridor known as the Miquelon segment
- Property architecture is predominantly ENE–WSW, with steeply dipping units and belt-parallel structural trends across the project
- Big picture: Benoist is interpreted as a structurally coherent gold system with mineralized cross-structures and sub-parallel systems
- Abundant processing capacity in close proximity



# BENOIST GOLD PROJECT

## Resource & Upside

- Historical (NI 43-101) MRE (2020): 241.4Koz (2.9MT @ 2.6 g/t Au) at 1.5 g/t cut-off
- Increases to >340Koz at 1.0 g/t cut-off
- +/- 20m average width should allow cut-off to drop further
- Open down plunge
- Other targets untested



# BENOIST GOLD PROJECT



Targeting

## Property Wide

High-resolution drone Magnetics + EM to better define structural targets

Prospecting and mapping to identify new targets

## Pusticamica Main

Re-evaluation of MRE in current price environment

Drilling to expand

## Lac Pusticamica-310

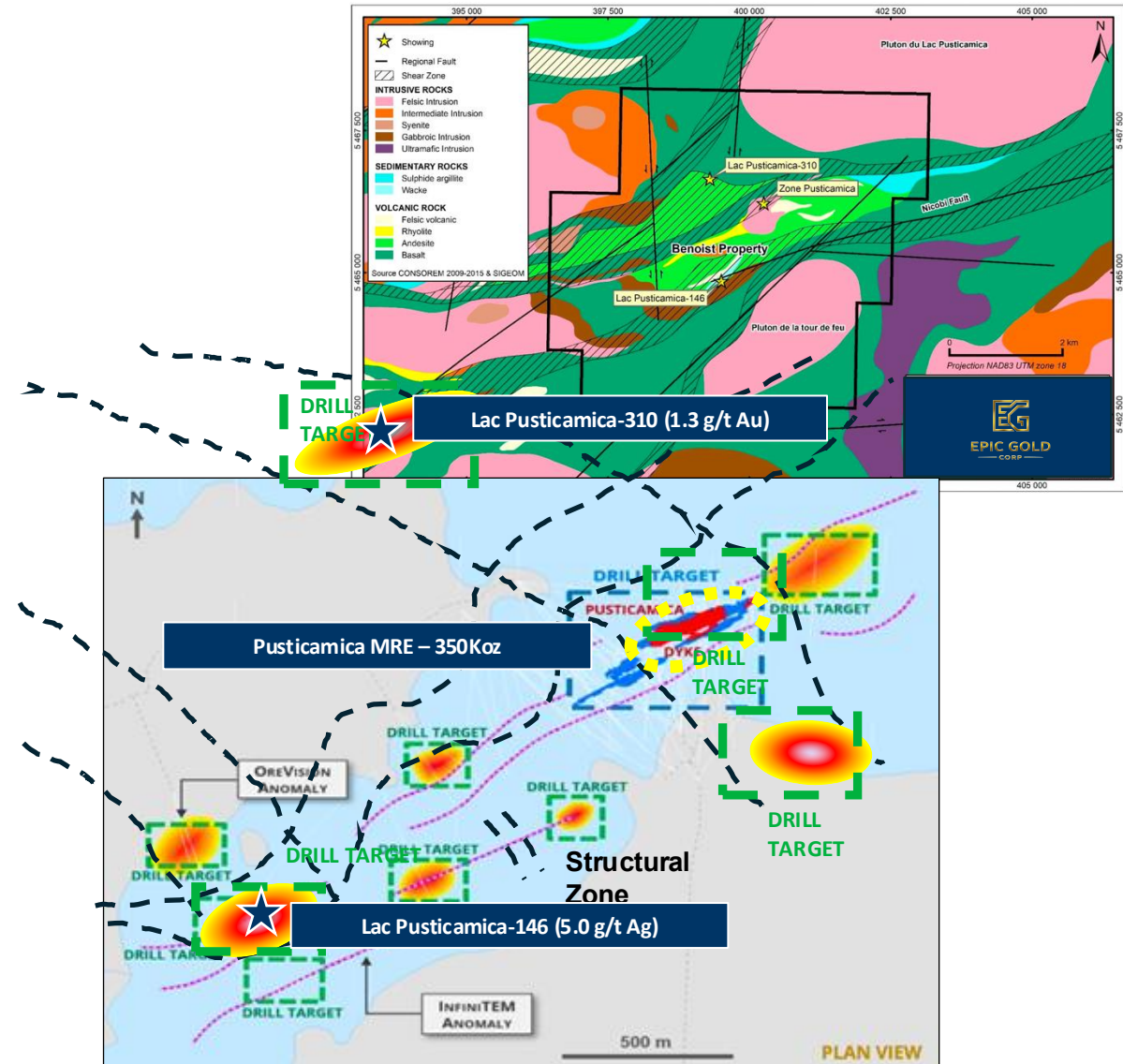
Confirm orogenic-style gold mineralization

Drill targets based on geophysics and prospecting

## Lac Pusticamica-146

Confirm Ag-Pb-Zn veining and identify mineral system target

Drill targets based on geophysics and prospecting



# HAWKINS GOLD PROJECT

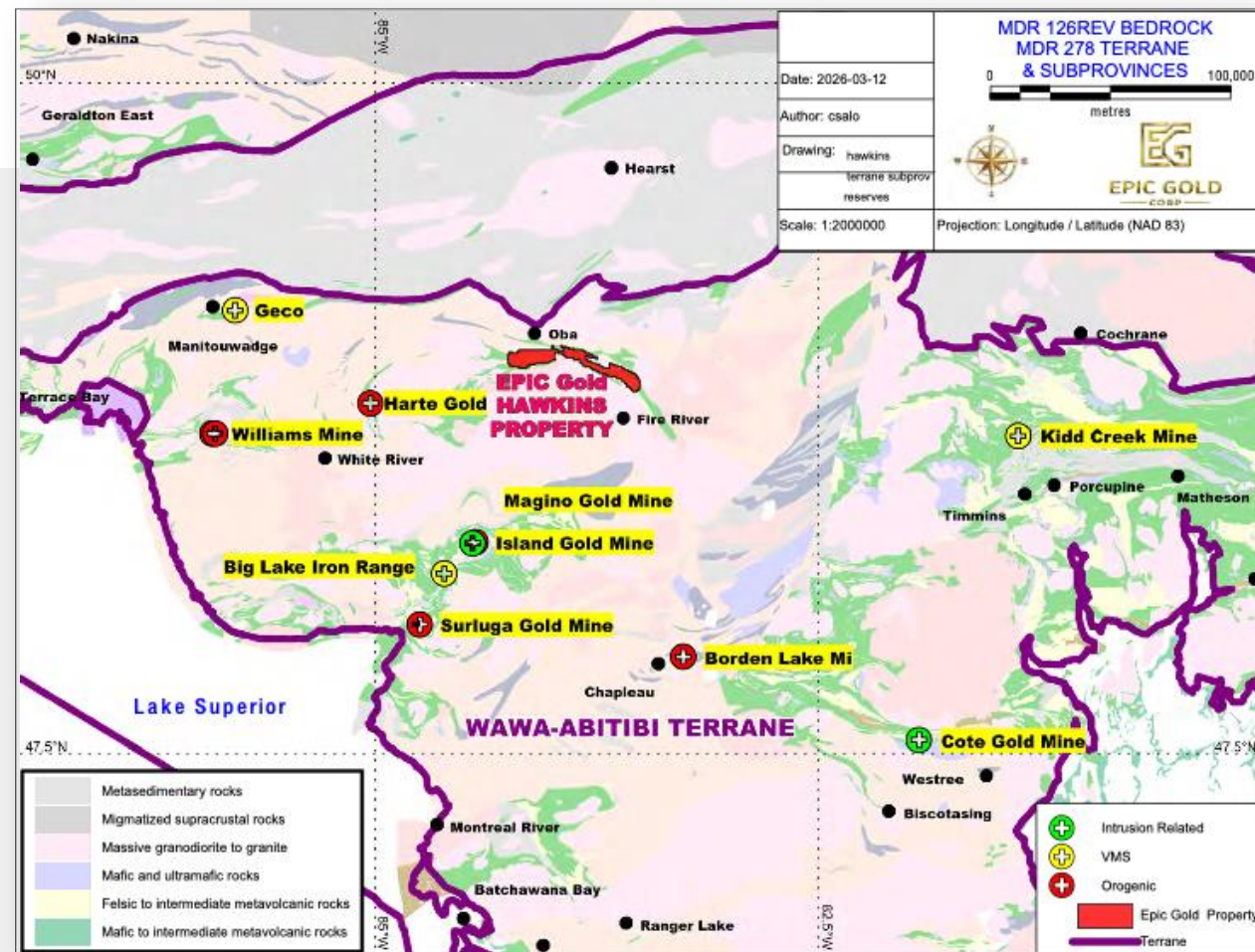


## Hearst, Ontario

(Archean-aged Kabinakagami Lake greenstone belt)

## Location & System Context

- Hawkins is located 140 km WNW of Hemlo and 200km E of Timmins in the Wawa Subprovince (Ontario)
- Hawkins is situated in Archean rocks of the Kabinakagami Lake greenstone belt
- Property architecture is defined by the E-W trending Puskuta Deformation Zone – the focus of the majority of the gold exploration in the region
- Big picture: Hawkins is interpreted as a structurally coherent gold system
- Several operating mines within a 200km radius of Hawkins

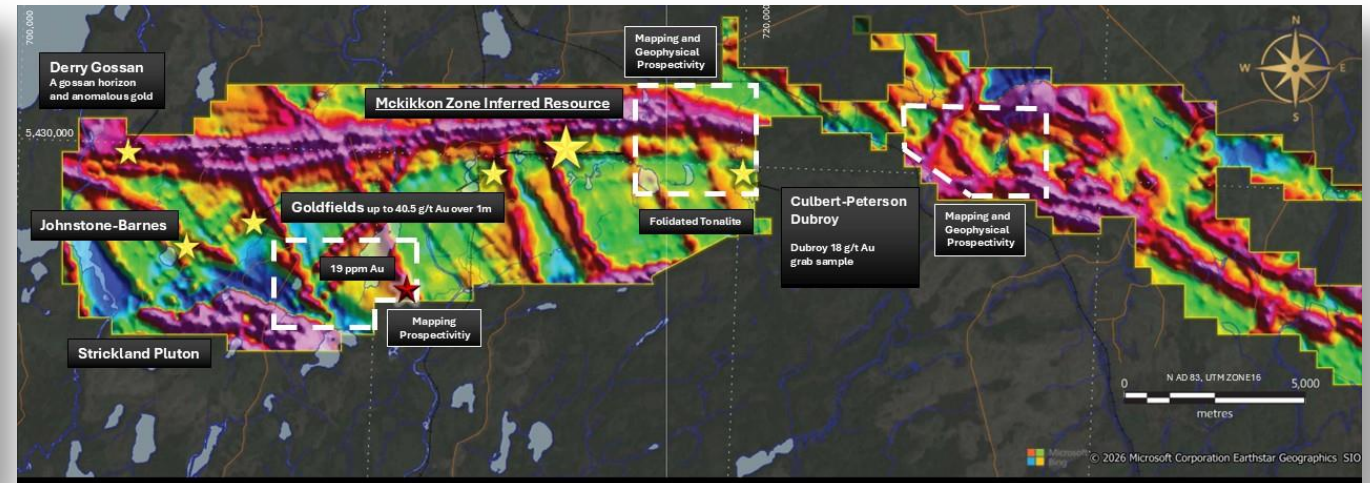
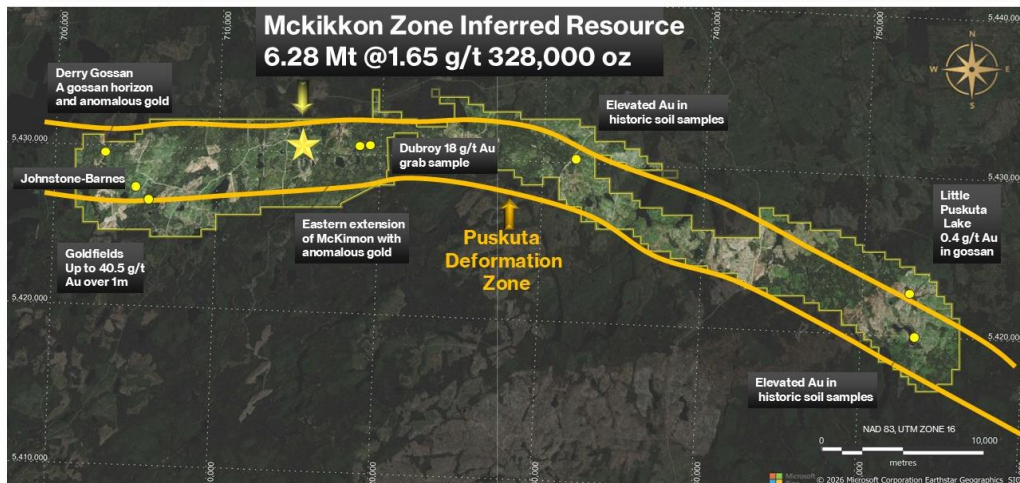


# HAWKINS GOLD PROJECT



## Geophysics & Targeting

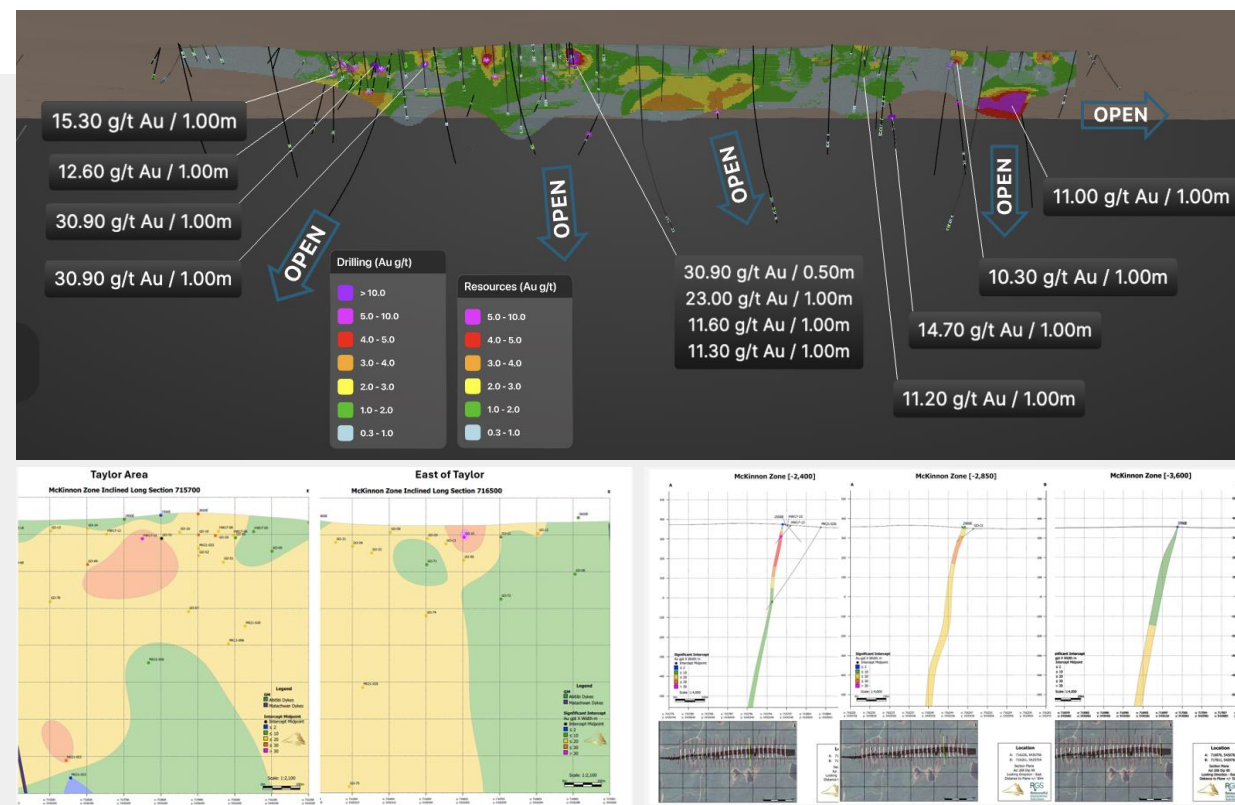
- Detailed airborne MAG defines structures in a portion of the property
- Historical prospecting has identified several prospective areas
- Mineralization is focused along deformation zones and cross-cutting faults



# HAWKINS GOLD PROJECT

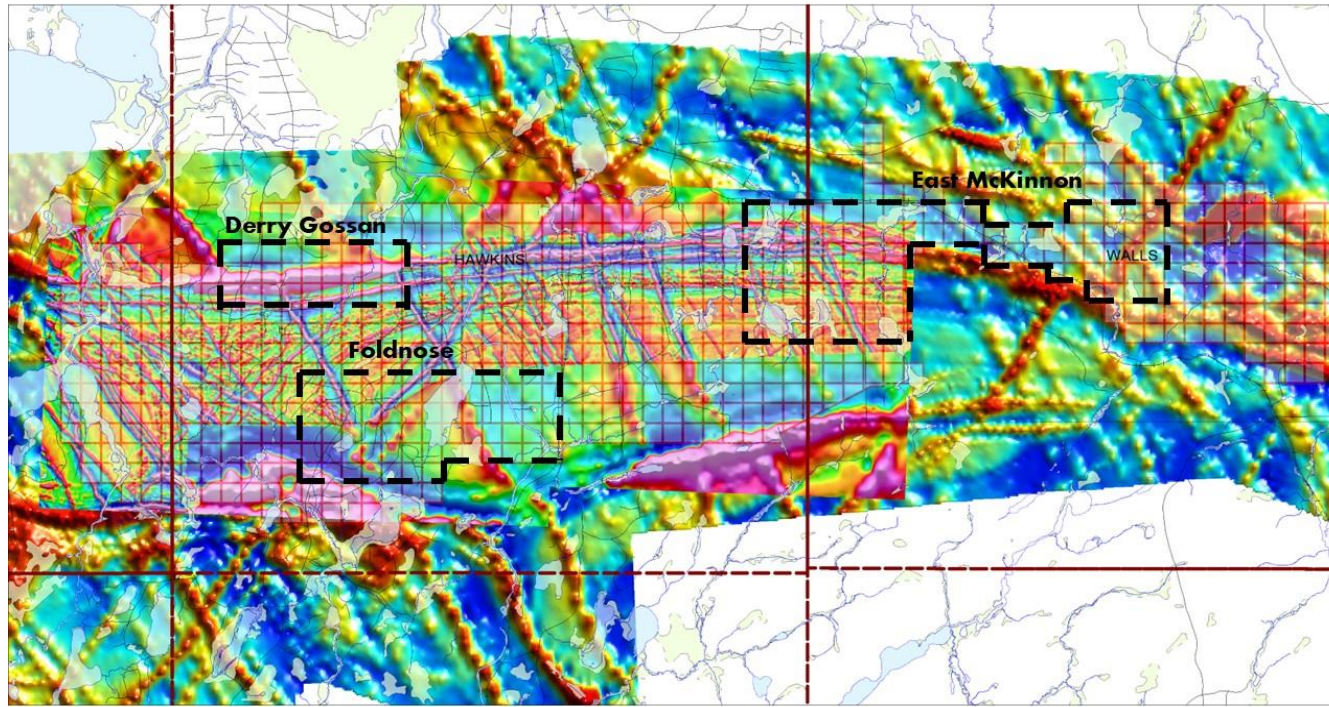
## Resource & Upside

- Historical Resource (2020): 328.8Koz, 6.2MT @ 1.65 g/t Au) at 0.5 g/t cut-off\*
- 13,000 metres since MRE but little impact on overall size - resource is constrained within the deformation zone
- Current resource is run-of-mine grade but need to find higher grade areas to make a mine:
  - at depth or along strike
- Evaluate and develop other targets on the property



\*\*Historical Estimate: a Qualified Person has not done sufficient work to classify the historical estimate as a current mineral resource; it should not be relied upon as current

# HAWKINS GOLD PROJECT



## FOLD NOSE AREA

- Detailed Magnetic and EM geophysical survey
- Geochemical sampling
- Prospecting & structural mapping
- Lake sediment sampling (re-sample and locate source)

## DERRY GOSSAN AREA

- Detailed Magnetic and EM geophysical survey
- Geochemical sampling
- Prospecting & mapping
- Trenching

## EAST MCKINNON AREA

- Trenching to investigate gold veins over complex structures
- Locate Culbert shaft, map and investigate Paymaster vein
- Detailed Magnetic and EM geophysical survey
- Gravity survey
- Prospecting & mapping

## Plans



60 km long property/deformation zone



Gold showings along the entire length



Less than 2 km has detailed exploration/drilling



Systematic exploration to develop additional drill targets



Detailed evaluation of existing resource to determine areas for expansion and grade increase

# THE PEOPLE



## Rod Husband

President & CEO, Director

Rod is a senior executive with over 30 years of leadership in natural resources, including experience in M&A and strategic growth. He was previously President and CEO of technical and resource-focused firms. Rod contributes business development and capital markets insight.

## Doug Cater

Chair

Doug is a professional geologist with over 35 years of discovery and development experience, notably as VP Exploration at Kirkland Lake Gold during its transformative growth. He played a key role in major gold discoveries at Macassa and Detour. Doug provides technical oversight and strategic direction.

## Fiona Fitzmaurice

Chief Financial Officer

Fiona is a CPA with over 18 years of experience in financial reporting, compliance, and corporate finance. She has served as CFO for several public mining companies, including juniors in exploration and development. Fiona oversees the company's financial strategy and reporting.

## Siri C. Genik

Director

Siri is a mining lawyer and ESG advisor with over 25 years of global project experience. She previously led stakeholder engagement at major companies including Rio Tinto and ArcelorMittal. Siri brings ESG governance, legal, and Indigenous engagement expertise to the board.

## Natalie Pietrzak-Renaud

Technical Advisor

Natalie is a professional geologist with over 20 years of exploration experience. She previously led exploration at the Hawkins Gold Project in Ontario and has held senior roles with several Canadian mining companies. At Epic, she provides technical expertise and strategic guidance on exploration programs. Her background spans gold, rare earths and diamonds across Canada and internationally.

## Larry Short

Director

Larry is a senior portfolio manager and investment strategist with over 35 years of experience in capital markets. He has served on public and private company boards and provides investor-centric guidance. Larry contributes financial oversight and market-facing strategy.

## Mark Richardson

Technical Advisor

Mark is a professional geologist with over 10 years of exploration experience across Canada, with a focus on structural geology and gold deposits. He has held senior roles with several Canadian exploration companies including Epic, Labrador Gold, Gold Terra Resources and GeoVector.

## Guy Bedard

Director

Guy is a Quebec-based mining engineer with more than 30 years of underground and open-pit experience spanning operations, projects and senior leadership roles across the Americas. Most recently he was the mine general manager at First Majestic Silver Corp. and previously served as underground mines director at Calibre Mining and general manager with Lundin Gold Inc. at the Fruta del Norte mine in Ecuador, following a period as principal of GB Consulting.

# VALUE PATHWAYS

## EV/OZ – PEER COMPARISONS

# 01

- N/A

## RESOURCEGRO WTH

# 02

- Exploration/Discovery
- Acquisitions

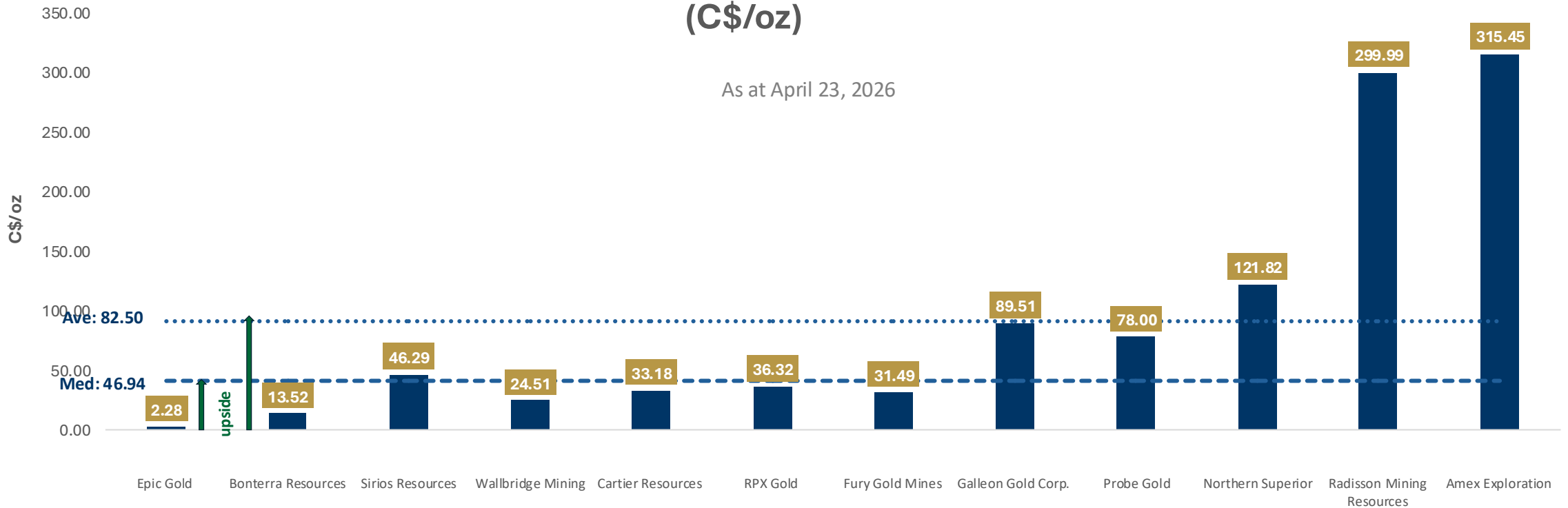
## MONETIZE NON- CORE ASSETS

# 03

- True Grit
- Mt. Peyton

## Comparable Peers EV/oz Au (C\$/oz)

As at April 23, 2026



# VALUE PROPOSITION

## Cash = Optionality



- ~C\$11M cash & equivalents;
- Drill + do deals without dilution

**Why it matters:** Cash buys time and leverage

## Tier-1 Canada Focus (QC+ON)



- Clear rules + transparent permitting infrastructure, mills, services, talent

**Why it matters:** Lowers jurisdiction risk

## Asymmetric Exploration Upside



- 680Koz resource base
- District-scale targets; multiple shots
- Cash supports downside valuation

**Why it matters:** More upside than downside

## Team That Executes



- Proven financings + deal structuring
- Technical depth in Abitibi-style systems

**Why it matters:** Execution > geology in juniors

## Multiple Catalysts



- Drill / JV / spin-out / sell

**Why it matters:** Not a single-bet story

## Timing Tailwinds



- Gold supported by geopolitics, CB buying, tight supply
- Deploy capital into weakness

**Why it matters:** Best entries come before sentiment turns



**EPIC GOLD**  
— CORP —

# EPIC GOLD CORP.

CSE:EPG | OTCQB:NFLDF | FSE:634



52 Church Street  
Toronto ON M5C 2B5



Tel: +1 (778) 819-2708



Email: [investors@epicgoldcorp.com](mailto:investors@epicgoldcorp.com)

**CORP DECK**

**TEMPLATES**

# LOREM IPSUM

Lorem ipsum dolor sit amet, consectetur adipiscing elit. Mauris pellentesque augue a imperdiet rutrum. Aliquam placerat sapien id pulvinar volutpat. Praesent vel auctor nibh, id placerat lorem. Nulla facilisi. Curabitur sit amet metus libero. Orci varius natoque penatibus et magnis dis parturient montes, nascetur ridiculus mus. Suspendisse ut risus eget sem vulputate feugiat ut sit amet quam. Etiam at ipsum non nibh gravida malesuada vel nec nisl. Donec nec aliquet tortor, nec pharetra turpis. Aliquam tristique posuere imperdiet. Curabitur at tincidunt dui. Vivamus semper pulvinar turpis vel condimentum. Mauris vitae purus ligula. Class aptent taciti sociosqu ad litora torquent per conubia nostra, per inceptos himenaeos.

Lorem ipsum dolor sit amet, consectetur adipiscing elit. Mauris pellentesque augue a imperdiet rutrum. Aliquam placerat sapien id pulvinar volutpat. Praesent vel auctor nibh, id placerat lorem. Nulla facilisi. Curabitur sit amet metus libero. Orci varius natoque penatibus et magnis dis parturient montes, nascetur ridiculus mus. Suspendisse ut risus eget sem vulputate feugiat ut sit amet quam. Etiam at ipsum non nibh gravida malesuada vel nec nisl. Donec nec aliquet tortor, nec pharetra turpis. Aliquam tristique posuere imperdiet. Curabitur at tincidunt dui. Vivamus semper pulvinar turpis vel condimentum. Mauris vitae purus ligula. Class aptent taciti sociosqu ad litora torquent per conubia nostra, per inceptos himenaeos.

Lorem ipsum dolor sit amet, consectetur adipiscing elit. Mauris pellentesque augue a imperdiet rutrum. Aliquam placerat sapien id pulvinar volutpat. Praesent vel auctor nibh, id placerat lorem. Nulla facilisi. Curabitur sit amet metus libero. Orci varius natoque penatibus et magnis dis parturient montes, nascetur ridiculus mus. Suspendisse ut risus eget sem vulputate feugiat ut sit amet quam. Etiam at ipsum non nibh gravida malesuada vel nec nisl. Donec nec aliquet tortor, nec pharetra turpis. Aliquam tristique posuere imperdiet. Curabitur at tincidunt dui. Vivamus semper pulvinar turpis vel condimentum. Mauris vitae purus ligula. Class aptent taciti sociosqu ad litora torquent per conubia nostra, per inceptos himenaeos.

# LOREM IPSUM DOLOR SIT AMET

Lorem Ipsum Dolor Sit Amet



## Lorem Ipsum Dolor Sit Amet

Lorem ipsum dolor sit amet, consectetur adipiscing elit. Mauris pellentesque augue a imperdiet rutrum. Aliquam placerat sapien id pulvinar volutpat. Praesent vel auctor nibh, id placerat lorem. Nulla facilisi. Curabitur sit amet metus libero.



## Lorem Ipsum Dolor Sit Amet

Lorem ipsum dolor sit amet, consectetur adipiscing elit. Mauris pellentesque augue a imperdiet rutrum. Aliquam placerat sapien id pulvinar volutpat. Praesent vel auctor nibh, id placerat lorem. Nulla facilisi. Curabitur sit amet metus libero.



## Lorem Ipsum Dolor Sit Amet

Lorem ipsum dolor sit amet, consectetur adipiscing elit. Mauris pellentesque augue a imperdiet rutrum. Aliquam placerat sapien id pulvinar volutpat. Praesent vel auctor nibh, id placerat lorem. Nulla facilisi. Curabitur sit amet metus libero.

# LOREM IPSUM DOLOR

Lorem Ipsum Dolor Sit

Lorem Ipsum Dolor

000

Lorem Ipsum Dolor

Lorem ipsum dolor sit amet, consectetur adipiscing elit. Mauris pellentesque augue a imperdiet rutrum. Aliquam placerat sapien id pulvinar volutpat. Praesent vel auctor nibh, id placerat lorem. Nulla facilisi. Curabitur sit amet metus libero.

000

Lorem Ipsum Dolor

Lorem ipsum dolor sit amet, consectetur adipiscing elit. Mauris pellentesque augue a imperdiet rutrum. Aliquam placerat sapien id pulvinar volutpat. Praesent vel auctor nibh, id placerat lorem. Nulla facilisi. Curabitur sit amet metus libero.

000

Lorem Ipsum Dolor

Lorem ipsum dolor sit amet, consectetur adipiscing elit. Mauris pellentesque augue a imperdiet rutrum. Aliquam placerat sapien id pulvinar volutpat. Praesent vel auctor nibh, id placerat lorem. Nulla facilisi. Curabitur sit amet metus libero.



# LOREM IPSUM DOLOR SIT AMET CONSECTETUR ADIPISCING ELIT

## Lorem Ipsum Dolor Sit

Lorem Ipsum Dolor

Lorem ipsum dolor sit amet, consectetur adipiscing elit. Mauris pellentesque augue a imperdiet rutrum. Aliquam placerat sapien id pulvinar volutpat. Praesent vel auctor nibh, id placerat lorem. Nulla facilisi. Curabitur sit amet metus libero.

---

Lorem ipsum dolor sit amet, consectetur adipiscing elit. Mauris pellentesque augue a imperdiet rutrum. Aliquam placerat sapien id pulvinar volutpat. Praesent vel auctor nibh, id placerat lorem. Nulla facilisi. Curabitur sit amet metus libero.

---

Lorem ipsum dolor sit amet, consectetur adipiscing elit. Mauris pellentesque augue a imperdiet rutrum. Aliquam placerat sapien id pulvinar volutpat. Praesent vel auctor nibh, id placerat lorem. Nulla facilisi. Curabitur sit amet metus libero.

# LOREM IPSUM DOLOR SIT AMET

## Lorem Ipsum Dolor Sit Amet



000

Lorem Ipsum Dolor  
Sit Amet

Lorem ipsum dolor sit amet, consectetur adipiscing elit. Mauris pellentesque augue a imperdiet rutrum. Aliquam placerat sapien id pulvinar volutpat. Praesent vel auctor nibh, id placerat lorem.

Lorem ipsum dolor sit amet, consectetur adipiscing elit. Mauris pellentesque augue a imperdiet rutrum. Aliquam placerat sapien id pulvinar volutpat. Praesent vel auctor nibh, id placerat lorem. Nulla facilisi. Curabitur sit amet metus libero. Orci varius natoque penatibus et magnis dis parturient montes, nascetur ridiculus mus. Suspendisse ut risus eget sem vulputate feugiat ut sit amet quam. Etiam at ipsum non nibh gravida malesuada vel nec nisl. Donec nec aliquet tortor, nec pharetra turpis. Aliquam tristique posuere imperdiet. Curabitur at tincidunt dui. Vivamus semper pulvinar turpis vel condimentum. Mauris vitae purus ligula. Class aptent taciti sociosqu ad litora torquent per conubia nostra, per inceptos himenaeos.

